


**Collaborating on Data Standards across Parts: Practical Steps and Lessons Learned from Atlanta, GA**

Ryan White Grantee Meeting  
August 25, 2008  
Washington, DC



---

---

---

---

---


---

---

---

**Overview**

- ▶ Introductions
- ▶ Background
- ▶ Process
- ▶ Sub-Service Document
- ▶ Benefits
- ▶ Challenges
- ▶ Next Steps



---

---

---

---

---


---

---

---

**Part A**

- ▶ Fulton County Government Ryan White Program
  - Jeff Cheek, Director
    - [Jeff.Cheek@fultoncountyga.gov](mailto:Jeff.Cheek@fultoncountyga.gov)
  - Kathy Whyte, Special Project Assistant
    - [Kathy.Whyte@fultoncountyga.gov](mailto:Kathy.Whyte@fultoncountyga.gov)
- ▶ 12 Providers in 20 county EMA



---

---

---

---

---

---

---

---

### Part B

- ▶ Georgia Department of Human Resources
  - Jeffrey Brock, HIV Care Program Director
    - [jebrock@chr.state.ga.us](mailto:jebrock@chr.state.ga.us)
  - Rosemary Donnelly, PHSO Nurse Consultant
    - [rdonnelly@chr.state.ga.us](mailto:rdonnelly@chr.state.ga.us)
- ▶ AIDS Drug Assistance Program (ADAP)
- ▶ Providers in 16 health districts across state



---

---

---

---

---

---

---

---

### Part C

- ▶ 17 EIS grantees across Georgia
- ▶ 100% multiply funded (A, B, and/or D)
- ▶ Opportunity to review sub-services with attention to Part C specific activities

---

---

---

---

---

---

---

---

### Part D

- ▶ Grady Infectious Disease Program
  - Jacque Muther, Project Director
    - [JMUTHER@gmh.edu](mailto:JMUTHER@gmh.edu)
- ▶ 4 Providers in Atlanta



---

---

---

---

---

---

---

---

## Part F

- ▶ Southeast AIDS Training and Education Center
  - Rebecca Culyba, Associate Director of Evaluation
    - [rculyba@emory.edu](mailto:rculyba@emory.edu)
- ▶ Center for Applied Research and Evaluation Studies
  - Provides Data Management and Special Studies Services to Fulton County Ryan White Part A Program



---

---

---

---

---

---

---

---

## Background

- ▶ Purpose
- ▶ Historic grantee collaboration in Georgia
- ▶ Data and reporting requirements
- ▶ Quality management
  - HRSA Performance Measures
  - Local Standards and Indicators
- ▶ CAREWare



---

---

---

---

---

---

---

---

## Purpose

- ▶ Adhere to federal reporting requirements
- ▶ Improve quality of data
- ▶ Align grantee communication to providers
- ▶ Increase capacity for grantee collaboration



---

---

---

---

---

---

---

---

### Grantee Collaboration in Georgia

- ▶ Quality Management
  - Chart Review
  - Client Satisfaction Survey
- ▶ Data collection and reporting
- ▶ CAREWare
- ▶ Other collaborative activities



---

---

---

---

---

---

---

---

### Data and Reporting Requirements

- ▶ Ryan White Program Data Report (RDR)
  - Major changes for 2007
    - Medical Case Management
    - Services split between “Core Services” and “Support Services”
- ▶ Client Level Data (CLD)



---

---

---

---

---

---

---

---

### Quality Management

- ▶ HRSA Performance Measures
  - ARV Therapy For Pregnant Women
  - CD4 T-Cell Count
  - HAART
  - Medical Visits
  - PCP Prophylaxis
- ▶ Local Standards and Indicators



---

---

---

---

---


---

---

---

## CAREWare

- ▶ Networked configuration in use across state
- ▶ Cost
- ▶ Technology
- ▶ Reporting
- ▶ Adaptability and potential



---

---

---

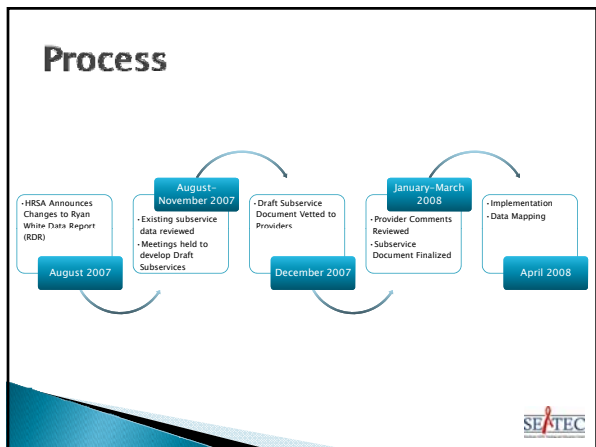
---

---

---

---

---



---

---

---

---

---

---

---

---

## CAREWare Sub-Services and Definitions


- ▶ HRSA RDR Service Categories

**33. CORE SERVICES**

- a. Outpatient/ambulatory medical services
- b. AIDS Pharmaceutical Assistance (local)
- c. Oral health care
- i. Mental health services
- j. Medical nutrition therapy
- k. Medical case management (including treatment adherence)
- l. Substance abuse services - outpatient

**SUPPORT SERVICES**

- m. Case management (non-medical)
- n. Child care services
- p. Emergency Financial Assistance
- q. Food Bank/home-delivered meals
- r. Health education/risk reduction
- s. Legal services
- u. Linguistics services
- v. Medical transportation services
- w. Outreach services
- y. Psychological support services
- z. Referral for health care/supportive services
- aa. Substance abuse services - residential
- ad. Treatment Adherence Counseling



---

---

---

---

---

---


---

---

## CAREWare Sub-Services and Definitions

▸ Parts A, B, D Requirements

Sub-service name	Definition	Unit	User Notes
Name of sub-service that corresponds to HRSA RDR service category and definitions.	Description of sub-service that corresponds with scope of service funded by Georgia Ryan White Parts A, B, and D grantees. Unless indicated otherwise, definitions refer to activity rather than specific personnel.	Discrete measure of 1 service. Units may be in terms of visits, sessions, time increments, etc.	Additional notes for CAREWare users that relate to grantee requirements and programs.




---

---

---

---

---

---


---

---

## CAREWare Sub-Services and Definitions

Georgia Ryan White Parts A, B, D  
CAREWare Sub-Services and Definitions

HRSA CORE SERVICES a. Outpatient/ambulatory medical services			
Subservice Name	Definition	Unit	Notes for Users
Initial Primary Care Visit	Intensive initial HIV primary care visit for a new client provided by a physician, physician's assistant, or advanced practice registered nurse. Includes chief complaint, history of present illness (HPI), past medical, family, and social history, complete review of systems (ROS), comprehensive physical exam, diagnosis/treatment plan, counseling and referrals as appropriate.	Visit	
Comprehensive Primary Care Visit	Intensive HIV primary care visit provided by a physician, physician's assistant, or advanced practice registered nurse. Includes annual physical exams and re-enrolling client visits with detailed and updated history, extended or complete ROS, detailed or comprehensive physical exam, diagnosis/treatment plan, counseling and referrals as appropriate. Takes more time than routine interim visit.	Visit	




---

---

---

---

---


---

---

---

## CAREWare Sub-Services and Definitions

- Frequently Asked Questions
  - RDR Requirements vs. Grantee Requirements
  - Billing
  - Service vs. Referral
- Troubleshooting
  - Scope of Work, Definitions
  - CAREWare




---

---

---

---

---

---

---

---

### Benefits

- ▶ Working toward statewide utilization data
- ▶ Avoid duplication of work
- ▶ Eliminate mixed messages to providers
- ▶ Share program, policy, and technology experience



---

---

---

---

---

---

---

---

### Challenges

- ▶ Medical Case Management
- ▶ Grantee Differences
  - Operating Procedures & Language
  - Case Management Standards
- ▶ CAREWare Technology
  - Data Mapping
  - Contracts
- ▶ Grantee or Agency Specific Sub-Services
- ▶ Multiply Funded Providers
- ▶ Provider Implementation
  - Encounter Forms



---

---

---

---

---

---

---

---

### Next Steps

- ▶ Data mapping
- ▶ Contract revision
- ▶ Encounter forms
- ▶ Address revisions and additions



---

---

---

---

---

---

---

---

## Acknowledgements

- ▶ This document would not have been possible without the cooperation of service providers in metro Atlanta and across the state of Georgia who receive Ryan White Funding and who provided valuable feedback and discussion.



---

---

---

---

---

---

---

---

## Questions?



---

---

---

---

---

---

---

---