

MATEC Michigan  
American Indian Health and Family Services, Inc.  
Inter-Tribal Council of Michigan

### Visiting the Council Fires:

Partnering with  
Urban and Tribal Indian Communities to  
Implement Culturally Relevant  
HIV/AIDS Training



---

---

---

---

---

---

---

---

Mary Rose Forsyth, MSN, WHNP  
Maria Lucy Harrison, RN  
Elaine Schuster, BA

Midwest AIDS Training and Education Center  
Michigan Local Performance Site  
Wayne State University School of Medicine  
Detroit, Michigan



---

---

---

---

---

---

---

---

### Roots of the MATEC Michigan AI/AN Program

- Included expert input from committed leadership of three agencies
  - Inter-Tribal Council of Michigan (ITC)
  - American Indian Health and Family Services (AIHFS)
  - Midwest AIDS Training and Education Center (MATEC Michigan)
- Based all interactions on a solid foundation of interpersonal trust and respect
- Gradually evolved a complex network of connections between AETC personnel and American Indian leaders
- Each agency dedicated staff to HIV outreach
- Partnership set three-year goals



---

---

---

---

---

---

---

---

## Three Agencies Three Partners A Three-Pronged Approach



---

---

---

---

---

---

---

---

## Urban Program

### American Indian Health and Family Services

- Issue: Urban American Indians are seldom identified
- AIHFS was founded to:
  - help ensure the survival of American Indian families and individuals
  - integrate traditional American Indian healing and spiritual practices with contemporary western medicine in both treatment and prevention.
- AIHFS Director recognized HIV/AIDS as a threat to the community



---

---

---

---

---

---

---

---

## Tribal Community Program

### Inter-Tribal Council of Michigan

- Issue: Tribal leadership did not perceive HIV as an imminent threat
- ITC acts as a forum for twelve recognized tribes
- ITC Health Services Division:
  - serves as a health program resource developer
  - recognizes HIV/AIDS as a significant health threat
  - seeks partnerships which may be used by tribes to improve health service delivery



---

---

---

---

---

---

---

---

## MATEC Michigan Program

Midwest Training and Education Center

- **Issue: Funding for AI/AN outreach has not been consistent year-to-year**
- **AETC project leaders recognize:**
  - HIV is a significant threat to American Indian communities in Michigan
  - Effective outreach to AI communities is based on trust
- **Supplemental grants and unrestricted pharmaceutical support bolster initiative as needed**



---

---

---

---

---

---

---

---

## Addressing the Issues



---

---

---

---

---

---

---

---

**Program coordinators from the three partnering agencies set a three-year goal to:**

- increase provider awareness of the impact of HIV on American Indian communities
- update providers' knowledge about HIV
- enhance providers' skills in providing culturally relevant HIV treatment
- promote collaboration between traditional healers and mainstream clinicians



---

---

---

---

---

---

---

---

- **MATEC Michigan outreach coordinator defined the scope of the community**
  - Consulted the US Census for data on population density ([www.census.gov](http://www.census.gov))
    - American FactFinder
    - Fact Sheet for a Racial, Ethnic or Ancestry Group
    - AI/AN alone, or in combination with one or more other races
    - Select State to get state data, then select each urban area to get its data



---

---

---

---

---

---

---

---

- **MATEC Michigan outreach coordinator ascertained the location and name of reservations, tribal and urban clinics, and community gathering centers**
  - Checked census data for each reservation area
  - Verified the names and contact information for all tribal and urban clinic health directors
  - Checked for urban American Indian community gathering centers



---

---

---

---

---

---

---

---

- **Program coordinators conducted formal and informal needs assessments addressing:**
  - cultural concerns as well as health concerns
    - historic trauma issues
    - relationships with mainstream health care
    - availability of and relationship with traditional medicine



---

---

---

---

---

---

---

---

## Pertinent Michigan Facts and How We Used Them



---

---

---

---

---

---

---

---

- Michigan has the ninth highest American Indian population in the US
- 124,412 Michigan residents identified themselves as American Indian, either alone or in combination with other races



---

---

---

---

---

---

---

---

## Urban Specifics

- Census 2000 counted 39,829 American Indians, or 32% of Michigan's total American Indian population, living in the Detroit Metropolitan Area
- Individuals from more than 40 federally recognized tribes live in or near Detroit
- Nearly 2/3 of Michigan's American Indians live in Detroit, Flint, Saginaw, Lansing, Kalamazoo and Grand Rapids, ie. in the southern third of the state



---

---

---

---

---

---

---

---



## Two Slide Presentations

*Walking in Two Worlds*  
Urban Areas

*In the Track of the Bear*  
Tribal Areas



---

---

---

---

---

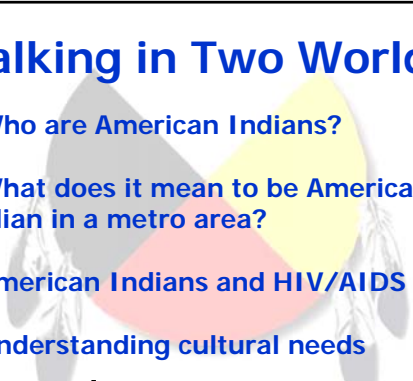
---

---

---

## Walking in Two Worlds

- Who are American Indians?
- What does it mean to be American Indian in a metro area?
- American Indians and HIV/AIDS
- Understanding cultural needs



---

---

---

---

---

---

---

---

## Key Points

- Identify and dispel myths concerning American Indian people
- Recognize and incorporate cultural issues into treatment plans
- Express key elements of the medicine wheel and teachings of the four directions



---

---

---

---

---

---

---

---

**In the Track of the Bear,  
a Healing Trail**

**Coordinating Community HIV/AIDS  
Awareness, Prevention and Treatment**

**matec**  
MIDWEST AIDS TRAINING + EDUCATION CENTER

Inter-Tribal Council  
of Michigan, Inc.

---

---

---

---

---


---

---

---

**Key Points**

- Learn the status of HIV/AIDS among Michigan American Indians
- Why should we be concerned?
- Cultural issues
- Discussion: What is being done locally?
  - Resources
  - Coordination of services



---

---

---

---

---

---

---

---

**A Regional Conference**

***HAART and the Medicine Wheel  
in HIV Care***



May 16, 2008  
Grand Traverse Resort  
Acme, Michigan

---

---

---

---

---

---

---

---

## Key Points

- Learn about current treatment options for HIV/AIDS
- Discuss unique medical and psychosocial issues affecting HIV-positive American Indians, especially two-spirit people, adolescents and women
- Explore the use of traditional American Indian medicine practices in HIV care



---

---

---

---

---

---

---

---

## Questions?



---

---

---

---

---

---

---

---

For further information, please contact

Mary Rose Forsyth, MSN, WHNP  
Program Coordinator  
MATEC Michigan  
AIDS Research and Education Center  
Wayne State University  
2727 Second Avenue, Suite 138  
Detroit, MI 48201  
313-962-2000 (office)  
313-408-3483 (cell)  
313-962-4444 (fax)  
[www.matecmichigan.org](http://www.matecmichigan.org)



---

---

---

---

---

---

---

---