




Project ReConnect: A Forward-looking
Response to the changing face of HIV
All Grantee Meeting August 26, 2008




Sonoma County, CA





Location & Size

Located along the Pacific coast about 50 miles north of San Francisco, Sonoma County is a mixed rural/suburban county, covering 1,579 square miles



Population Demographics

County Population (2000 Census):

Race	Number	Percent
White	341,686	74.5
Hispanic	79,511	17.3
Black	6,116	1.3
Am. Indian	3,477	0.8
Asian	13,786	3.0
Pac. Islander	828	0.2
Other	921	0.2
Two or more	12,289	2.7
Total	458,614	100

Sonoma County HIV/AIDS Snapshot

- **>1200** persons diagnosed **with HIV/AIDS** in Sonoma County
- **Original epidemic** was predominantly **White MSM**
- **Recent trends** show **increases** in **Women, Latinos** and persons with **heterosexual exposure**
- Large proportion of **persons late to care**, particularly **women** and **Latinos**

Migration

- Many persons with HIV move to Sonoma County after diagnosis.
- In our most recent client survey, of the persons diagnosed with AIDS, 51% were diagnosed outside of the County.
- Sonoma County attracts clients due to its comprehensive network of services, lack of waiting lists, and reputation for good services.

Project ReConnect Philosophy

- Project ReConnect works to support people with HIV to re-imagine their futures. We seek to address social, emotional, educational and vocational needs and to equip individuals to make positive steps to explore new possibilities which lead to satisfying, meaningful and healthy lives.

Project ReConnect

- Funding quest
- Staffing
- Implementation
- ReConnect Advocates
- Moving Forward
- Resulting in less financial pressure on the system

ReConnect Timeline


- 2004 Back to Work task force
- 2005 Re-Entry Event
- 2006 ReConnect took off
- 2006 New legislation
- 2007 Contracts required ReConnect activities
- 2008 ReConnect Advocates!
- 2010 New legislation (?)

Project ReConnect Journey

- Disconnection
 - Long-term survivors
- Staying connected
 - Newly diagnosed
- Reconnecting
 - HIV Service Providers

Project ReConnect in Sonoma

- Responds to NOW
- HIV is no longer our biggest issue
Addresses exceptionalism
- Consumer designed
- Individualized, customized
- What it's NOT: "Go get a job and stop taking services"




PROJECT RECONNECT

Matrix Of Reconnect Activities Already In Your Area

Programs and Resources of HIV Service Providers	HIV Specific Support Groups	Programs with Non HIV Service Providers	Community Activities	Job Placement	School Entry Support	Other	Other
Chronic Disease Self Management Group	Positive Women's Gathering	Council on Aging	Sister's Bnago	Employment Development	Junior College Dept of Rehabilitation		


1

 **Planning Council Reconnect**

- Managing Scarcity – CA EMA conference
- Fear to Hope
- Consensus Building
- Funding Allocation Working Group (FAWG)

 **Planning Council ReConnect**

- Adopted ReConnect philosophy
- Consumer Leadership and Decision makers
- Providers meet consumers current needs
- Involvement by Planning Council members "outside HIV bubble" - Non-HIV Planning Councils

 **Provider ReConnect**

- Experienced staff is re-energized
- Clients as prepared partners
- Service delivery redefinition
 - Who best delivers services
 - Change from dependence to interdependence and community engagement
- Shift can be gradual



Fiscal Reality

- Funding levels in 2010 are unknown
- Planning began in 2006
- Focus on maintaining quality services
- Living calendar – 18 months to go
- Project ReConnect philosophy - all levels
- Project ReConnect – system wide



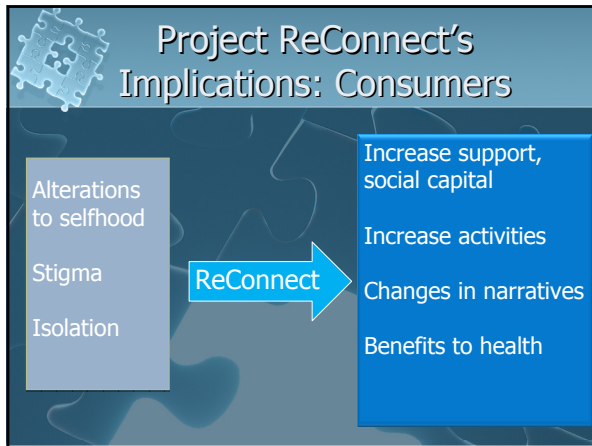
Individual ReConnect

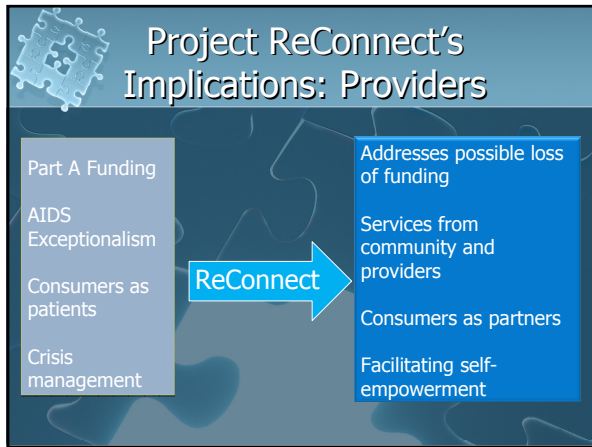
- For the entire spectrum of clients
- Enhancing life without fostering dependence
- Self empowering



Current Challenges

- Individual fears – “can I do it?”
“how will this affect my benefits?”
- Provider fears – “will this put me out of a job?” “do we have the time?”
- Community – “aren’t *they* being served by the HIV providers?”
“do we know how to serve *them*?”





Definition of Social Capital

Access to actual or potential resources :

- Based on trust and respect
- Entails reciprocity for mutual benefit
- Characterized by high levels of involvement in local organizations and networks (Bourdieu 1977, Putnam 1993)

Benefits of Social Support/Social Capital

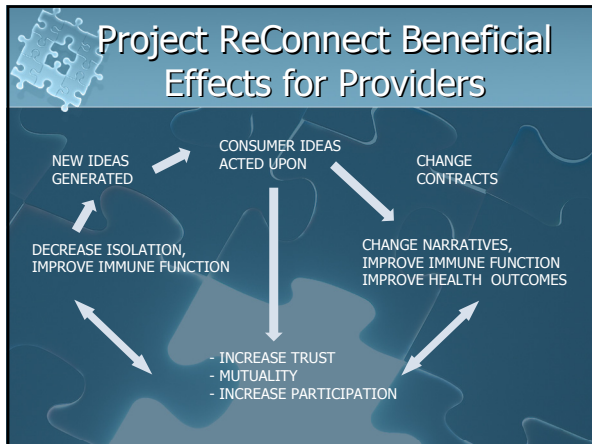
- Positive outlook, improved mental health, reduced rate of HIV disease progression
(Gelan et al. 2001, Burgoyne and Renwick 2004, Leserman et al. 2000)
- Reduced mortality, increased long term survivability where a longterm partner is present
(Solomon 2000, Young et al. 2004)
- Reduced stress and psychological despair from living with HIV/AIDS (Kelly and Kalichman 2002)
- Improved self-esteem (Stein et al. 2005, Belgrave et al. 2001)

Access to Social Capital

Access varies by:

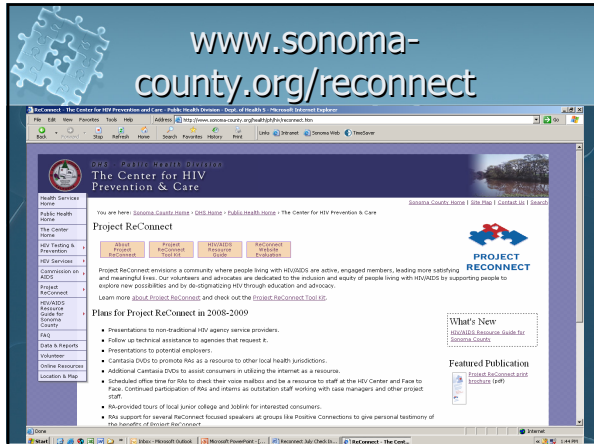
- Ethnicity
- Sexual Identity
- Age
- Social Class
- Gender
- Geographic Location

The Project ReConnect Community



- ### Project ReConnect Beneficial Effects for Providers
- Changes in providers' stories of consumers, from recipient to co-collaborator.
 - Services more relevant to consumers' needs.
 - As services move to non traditionally HIV specific providers, reduce stigma and provide models for other chronic illness treatment.

- ### Lessons Learned
- ReConnect means different things to different people
 - ReConnect can feel "forced" – EXPECT it!
 - ReConnect should always be client designed for success
 - ReConnect breaks down isolation







What Is Project ReConnect?

- I matter
- Re-evaluating life
- Life
- Self-sufficiency and self-reliance
- Re-imagining
- Breaking self imposed boundaries
- Back to life
- Respect
- Possibility
- Joining
- Dynamic balance
- Good social work
- Interaction and encouragement
- Not alone
- Experimenting
- Rebirth (ouch)
- Life-off-layaway (living)
- Identify the clients' need at the moment
- Awakening mindfulness
- The next step
- New beginning
- Interdependence
- Hope
- New direction
- Re-integration
- Empowerment
- Self-coaching
- De-stigmatization
- Freedom – expanding
- Freedom from ball and chain of assistance
- Anything and everything
- Life purpose
- Meaningful work

YOU Can Do It !

