



# 2020 National Ryan White Conference on HIV Care and Treatment Rural Health & HIV-Related Stigma Institute

## Session 201: Federal Resources and Community Initiatives to Reduce HIV-Related Stigma in Rural Areas

Ijeamaka Okoye, MPH  
Taria Poteat, MPH  
HIV/AIDS Bureau (HAB) Rural Health & HIV Workgroup

*August 12, 2020*

**Vision: Healthy Communities, Healthy People**



# Health Resources and Services Administration (HRSA)

## Overview

---

- Supports more than 90 programs that provide health care to people who are geographically isolated, economically or medically vulnerable through grants and cooperative agreements to more than 3,000 awardees, including community and faith-based organizations, colleges and universities, hospitals, state, local, and tribal governments, and private entities
- Every year, HRSA programs serve tens of millions of people, including people with HIV/AIDS, pregnant women, mothers and their families, and those otherwise unable to access quality health care



# HRSA's HIV/AIDS Bureau (HAB) Vision and Mission

---

## Vision

Optimal HIV/AIDS care and treatment for all.

## Mission

Provide leadership and resources to assure access to and retention in high quality, integrated care, and treatment services for vulnerable people with HIV/AIDS and their families.



# HRSA's Ryan White HIV/AIDS Program

- Provides comprehensive system of HIV primary medical care, medications, and essential support services for low-income people with HIV
  - More than half of people with diagnosed HIV in the United States – nearly 519,000 people – receive care through the Ryan White HIV/AIDS Program (RWHAP)
  - Funds grants to states, cities/counties, and local community based organizations
    - Recipients determine service delivery and funding priorities based on local needs and planning process
- Payor of last resort statutory provision: RWHAP funds may not be used for services if another state or federal payer is available
- 87.1% of Ryan White HIV/AIDS Program clients were virally suppressed in 2018, exceeding national average of 62.7%



Source: HRSA. Ryan White HIV/AIDS Program Annual Client-Level Data Report 2018; CDC. HIV Surveillance Supplemental Report 2018;21(No. 4)



# HAB Rural Health & HIV Workgroup's Mission

---

To provide support and resources to HAB recipients and stakeholders to assist in the delivery of optimal care and treatment for people with HIV in rural communities.



# Agenda

---

- I. Session 101 Overview
- II. Stigma and the Special Projects of National Significance (SPNS) Program
- III. AIDS Education and Training Centers (AETC) Program Resources
- IV. HRSA Recipient Presentation by CommWell Health
- V. Overview of Federal Resources
- VI. Q&A



# Objectives

---

1. Upon completion of the workshop, participants will be able to identify federal resources, including the AETC program and SPNS initiatives to reduce stigma in rural areas.
2. Upon completion of the workshop, participants will be able to identify stigma-reducing strategies that may improve clinical outcomes for their clients' in rural areas.
3. Upon completion of the workshop, participants will be able to identify people with HIV's barriers to accessing care impacted by stigma in rural areas.



# Session 101 Overview – Recap

---

- **Title:** Overview of HIV- Related Stigma and HIV Care and Treatment in Rural RWHAP Settings
  - Overview of the Ryan White HIV/AIDS Program (RWHAP) in rural areas
  - Discussion of the reach of the RWHAP in rural areas
  - Discussion of the role of rural jurisdictions in the Ending the HIV Epidemic Initiative





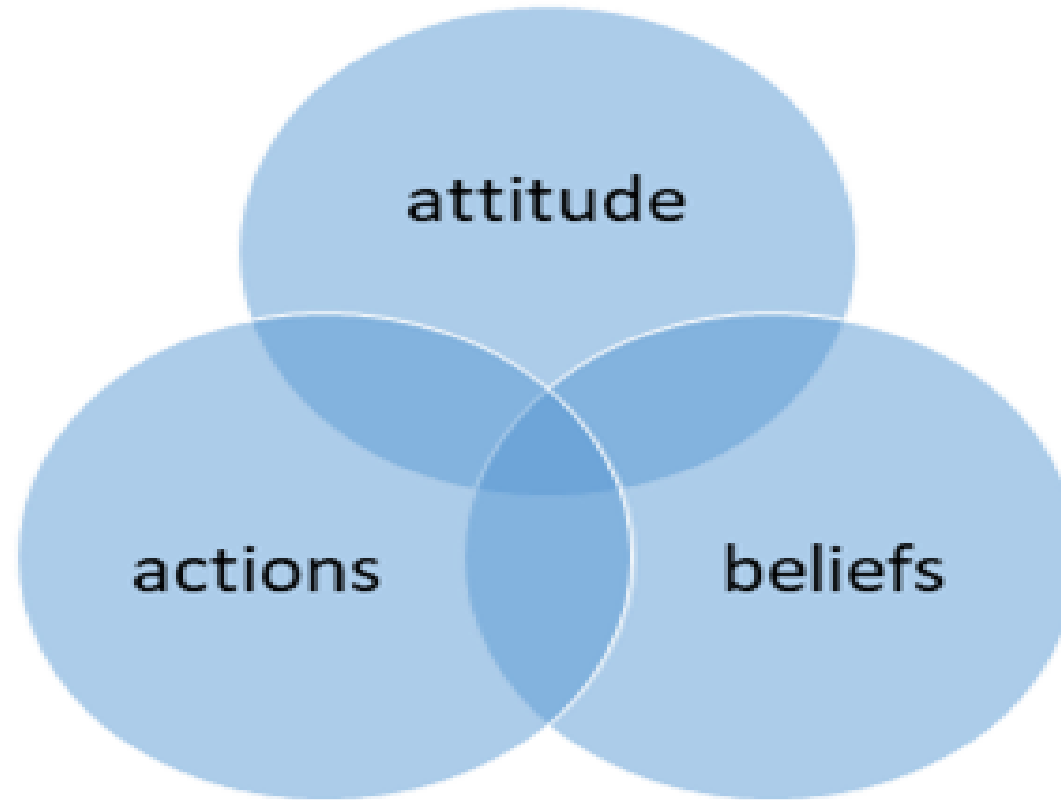
# Stigma

---

Negative feelings, beliefs, and behavior directed toward an individual or group due to a particular label or characteristic.

# Characteristics of Stigma

---



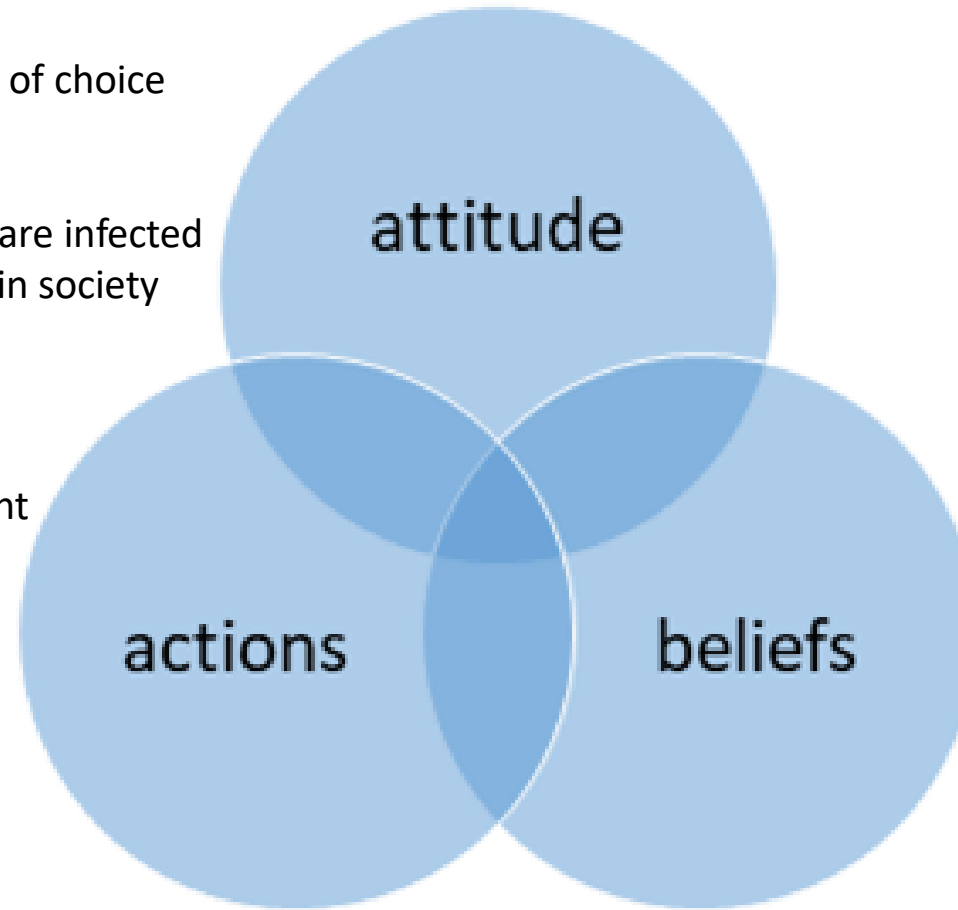
# Characteristics of Stigma

## Attitude:

- Discredit a person or a group
- People deserve to get HIV because of choice
- Fear
- People perceived to be infected
- People associated with those who are infected
- Coupled with marginalized groups in society
- Self-stigmatization - shame

## Actions: - unfair treatment

- Discrimination
- Social ostracism
- Refusing contact
- Violating confidentiality
- Diminished support
- Violence



## Beliefs:

- Socially unacceptable
- Only certain groups can get HIV
- Stereotypes
- Influenced by myths

# Stigma and the Special Projects of National Significance Program

2020 National Ryan White Conference on HIV Care and Treatment

*August 2020*

Melinda Tinsley, MA, Senior Public Health Analyst and Chau Nguyen, Public Health Analyst  
Division of Policy and Data  
HIV/AIDS Bureau (HAB)



# The Special Projects of National Significance Program (SPNS)

---

- Authorized under **Part F** of the Ryan White HIV/AIDS Program, Section 2691
- **What SPNS Does:**
  - **Supports development of innovative models of HIV care** to quickly respond to the emerging needs of clients served by the Ryan White HIV/AIDS Program
  - **Evaluates effectiveness of the models'** design, implementation, utilization, cost, and health-related outcomes
  - **Promotes dissemination and replication** of successful models
  - **Supports special programs to develop standard electronic client information data systems** to improve grantee- and client-level data reporting to HHS



# Stigma and RWHAP SPNS Initiatives

---

- Presents as a persistent barrier to participant recruitment and access to HIV primary treatment, consistent with other findings
- Has been associated with delayed entry into care in most initiatives
- Impacts the prevention and care continuum
- Reinforced by sociocultural factors (i.e., race, sexual orientation, gender identity and expression, Hispanic/Latino gender norms)
- Mostly measured by proxy outcomes (participant experiences with discrimination, violence, denial of care, etc.)

# Past/Recently Completed Initiatives

---

- Systems Linkage and Access to Care for Populations at High Risk of HIV Infection (2011 – 2016)
- Enhancing Access to and Retention in Quality HIV Primary Care for Transgender Women of Color (2012 – 2017)
- Building a Medical Home for Multiply Diagnosed HIV-Positive Homeless Populations (2012 – 2017)
- Culturally Appropriate Interventions of Outreach, Access, and Retention among Latino/a Populations (2013 – 2018)
- Use of Social Media to Improve Engagement, Retention, and Health Outcomes along the HIV Care Continuum (2015 – 2019)



# Current Initiatives

---

- Implementation of Evidence-Informed Behavioral Health Models to Improve HIV Health Outcomes for Black Men Who Have Sex With Men
- Dissemination of Evidence-Informed Interventions to Improve Health Outcomes along the HIV Care Continuum Initiative
- Using Evidence-Informed Interventions to Improve Health Outcomes among People Living with HIV (E2i)
- Evidence-Informed Approaches to Improving Health Outcomes for People Living with HIV





# Current Initiatives Continued

---

- Improving HIV Health Outcomes through the Coordination of Supportive Employment and Housing Services
- Curing Hepatitis C among People of Color Living with HIV
- Jurisdictional Approach to Curing Hepatitis C among HIV/HCV Coinfected People of Color
- Capacity Building in the Ryan White HIV/AIDS Program to Support Innovative Program Model Replication



# Coming Soon

Minority HIV/AIDS Funding Activities



# Improving Care and Treatment Coordination: Focusing on Black Women with HIV

---

**Purpose:** To design, implement, and evaluate the use of bundled interventions for Black women with HIV. The program also focuses on implementing various stigma-reducing approaches with an emphasis on increasing cultural humility in care and treatment settings for people with HIV within the RWHAP.

## **Funding Summary:**

- Twelve Demonstration Sites and One Evaluation and Technical Assistance Provider
- Period of Performance: September 1, 2020 through August 31, 2023



# Implementation of Bundled Interventions

- Demonstration sites will implement a minimum of two evidence-informed interventions to offer a coordinated and comprehensive bundled intervention to be delivered simultaneously.
  1. Enhanced patient navigation, enhanced case management, or peer engagement
  2. Red Carpet Care Experience, which provides support and addresses barriers to accessing HIV care including such services as transportation, food/nutrition, housing, employment, mental health, or social support, among others
  3. Stigma reduction intervention that can speak to social determinants of health (e.g., address stigma and the environment, use media to show HIV has a human face, engage the community, help institutions recognize stigma, educate about stigma and HIV)
  4. Use of trauma-informed interventions, provider and/or organizational training on guiding principles to a trauma-informed approach
  5. Self-efficacy, health literacy or resiliency
  6. Interventions for IPV, physical and sexual violence, or other behavioral health needs (e.g. provider and /or organizational training on IPV, physical and sexual violence prevention, or behavioral health and care coordination with other community-based services)



# Reducing Stigma at Systems, Organizational, and Individual Client Levels in the RWHAP (HRSA-20-112)

---

**Purpose:** To reduce stigma for people with HIV on multiple levels throughout the health care delivery system, including on an individual client level. The program also focuses on implementing various stigma-reducing approaches with an emphasis on increasing cultural humility in care and treatment settings for people with HIV within the RWHAP.

## Funding Summary:

- One cooperative agreement recipient
- Period of Performance: September 1, 2020 through August 31, 2024



# Reducing Stigma Program Objectives

---

- Assess readiness of RWHAP recipients to implement stigma reduction strategies and assess technical assistance (TA) needs
- Develop an inventory of existing trainings, tools, and materials that reduce stigma
- Provide training and time-limited TA to RWHAP recipients to reduce stigma
- Provide training to people with HIV in stigma reduction interventions
- Develop, facilitate, and evaluate learning collaboratives aimed at reducing stigma
- Participate in national conferences and forums to present and disseminate relevant stigma reduction information

# Deep Dives: A Closer Look at Specific Stigma Reduction Activities in SPNS Projects



# RWHAP SPNS Transgender Women of Color Initiative 2012 – 2017

---

- Ten demonstration sites in four urban centers (NYC, Chicago, Los Angeles and the San Francisco Bay Area)
- Qualitative Interviews with Participants & Interventionists:  
“This community feels like they have lost their personhood. Their personhood has been rendered to scopes and numbers and MSMs and positives and TWOC. But no one is really actively looking at them as real people that are facing really serious barriers.” – Outreach Worker



# Friends Research Institute: Transgender Imagery



# RWHAP SPNS Latino Initiative 2013 - 2018

---

- Six projects with Mexican-American target populations and four projects with Puerto Rican target populations
- Applicants asked to include a specific stigma reduction plan in their interventions
  - Assessment of Enacted
  - Felt and Anticipated Stigma across the domains of HIV
  - Immigrant
  - MSM
  - Transgender



# RWHAP SPNS Latino Initiative 2013 - 2018

---

- Stigma reduction plans include:
  - Social media (text messaging, etc.)
  - Social networking
  - Project websites
  - Client-centered events and gatherings
  - Health and wellness-framed materials
  - Gay-friendly, sex-positive clinical settings
  - Inclusion of stigma in provider cultural competency training

# RWHAP SPNS Homeless Initiative 2012 – 2017

---

- Incorporates HIV, homelessness and behavioral health into a unified health system to normalize treatment interventions
- Stigma Sub-study to examine how HIV stigma impacts clinical outcomes and housing status for HIV-positive homeless and unstably housed individuals
- Research question: How does HIV-related stigma and discrimination related to being homeless or unstably housed, having a mental health condition, and substance use history impact access to, engagement and retention in care and other services?
- Goal: Develop a comprehensive measure of stigma and how it interacts with HIV care outcomes; how it relates to the components of PCMH (care integration); and how it is influenced by patient navigation
- Findings will be used to identify critical points for individual, provider, institutional, and community-level interventions to mitigate the impact of stigma in the engagement and retention in care



# RWHAP SPNS Dissemination of Evidence-Informed Interventions Initiative 2015 - 2019

---

This initiative addresses HIV-related stigma and discrimination at numerous levels:

- Peer and Patient Navigation Interventions address stigma at the client level through focused coaching of participants on how to discuss issues of disclosure in both the patient's personal life and the medical setting
- The TA agendas and intervention work plans for the performance sites include training on the impact of HIV-related stigma for intervention staff and clinic staff
- Performance sites are required to involve PWH in their local planning process so that their programs do not unintentionally perpetuate HIV-related stigma



# Black MSM Initiative

---

- Three-year Initiative that funds eight recipient sites to implement and evaluate evidence-informed behavioral health interventions and/or models of care (MOCs) to engage, link, and retain BMSM living with HIV in medical care and supportive services.
- To augment multi-site evaluation, the ETAP recommended a focused, culturally-responsive mixed method study using:
  1. Digital interviews with BMSM clients to understand, perceived discrimination, micro-aggressions, enacted, anticipated and internalized stigma; and
  2. An online survey of HCPs to understand how they provide culturally-appropriate care attentive to stigma reduction for HIV positive BMSM. Focused study findings will guide adaptations to the HRSA BMSM Initiative focused on stigma-reduction.

# Examples of Supporting Materials





# Care Engagement Project

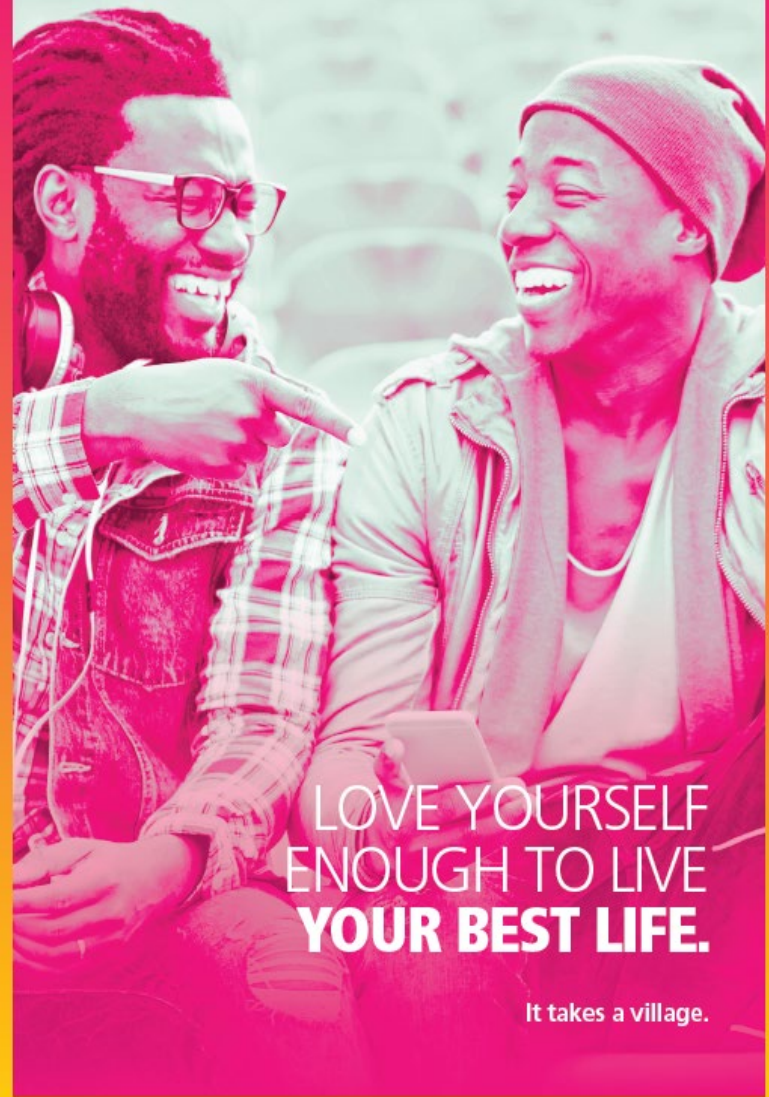
A PROGRAM OF  
CHRISTIAN COMMUNITY  
HEALTH CENTER

THE CARE ENGAGEMENT PROJECT IS HERE  
TO HELP MEN LIVING WITH HIV.

The Care Engagement Project connects people living with HIV to the services they need to live a better and healthier life. Information from this intervention will be used to evaluate impact and increase knowledge about how to best engage African American/Black men who have sex with men in care and improve their HIV care experiences.



*The Village Project*



LOVE YOURSELF  
ENOUGH TO LIVE  
**YOUR BEST LIFE.**

It takes a village.



DIP IN TO YOUR HEALTHCARE WITH

# PROJECT VOGUE! NYC

ACTIVE IN THE BALLROOM OR KIKI SCENE?  
NEWLY DIAGNOSED OR LIVING WITH HIV A WHILE?  
NEED SUPPORT GETTING TO UNDETECTABLE?





# Contact Information

---

**Melinda Tinsley, MA**

Email: [mtinsley1@hrsa.gov](mailto:mtinsley1@hrsa.gov); Phone: 301-443-3496

**Chau Nguyen**

Email: [CNguyen1@hrsa.gov](mailto:CNguyen1@hrsa.gov); Phone: 301-443-5785

**Email:** [SPNS@hrsa.gov](mailto:SPNS@hrsa.gov)

**Web:** [hab.hrsa.gov](http://hab.hrsa.gov)

*Thank you for your attention and interest!*





VIRTUAL  
**2020 NATIONAL  
RYAN WHITE  
CONFERENCE ON  
HIV CARE & TREATMENT**

# HIV and Stigma in Rural Communities Training, Consultative and Technical Assistance Role of the AIDS Education & Training Centers

**Linda Rose Frank, PhD, MSN, ACRN, FAAN**

Professor, Department of Infectious Diseases and Microbiology, Graduate School of Public Health

Professor, Center for Translational Science Institute, School of Medicine

Professor, Community and Health Systems, School of Nursing

Principal Investigator, MidAtlantic AIDS Education & Training Center

Recipient, University of Pittsburgh, Chancellor's Public Health Service Award

Chair, City of Pittsburgh HIV Commission



## Mission

Increase the number of health care providers who are effectively educated and motivated to counsel, diagnose, treat, and medically manage people with HIV, and to help prevent high-risk behaviors that lead to HIV transmission

*The RWHAP AETC Program recognizes the importance of a well-trained HIV health workforce as a crucial step toward ending the HIV epidemic in the U.S.*

# AETC Program Goals



- Increase the size and strengthen the skills of the HIV clinical workforce in the United States.
- Improve outcomes along the HIV care continuum, including diagnosis, linkage, retention and viral suppression, in alignment with the National HIV/AIDS Strategy, through training and technical assistance.
- Reduce HIV incidence by improving the achievement and maintenance of viral suppression in people with HIV.

# AETC Program Overview



VIRTUAL  
2020 NATIONAL  
RYAN WHITE  
CONFERENCE ON  
HIV CARE & TREATMENT

8 Regional AETCs

National Coordinating  
Resource Center (NCRC)

## AIDS Education and Training Centers Program

National Clinician  
Consultation Center (NCCC)

National Evaluation  
Contractor (NEC)

### National HIV Curriculum (NHC) Programs:

1. Enhancement and Update of NHC e-Learning Platform
2. Technology Operations and Maintenance of NHC e-Learning Platform
3. Integration of NHC into Health Care Provider Professional Education

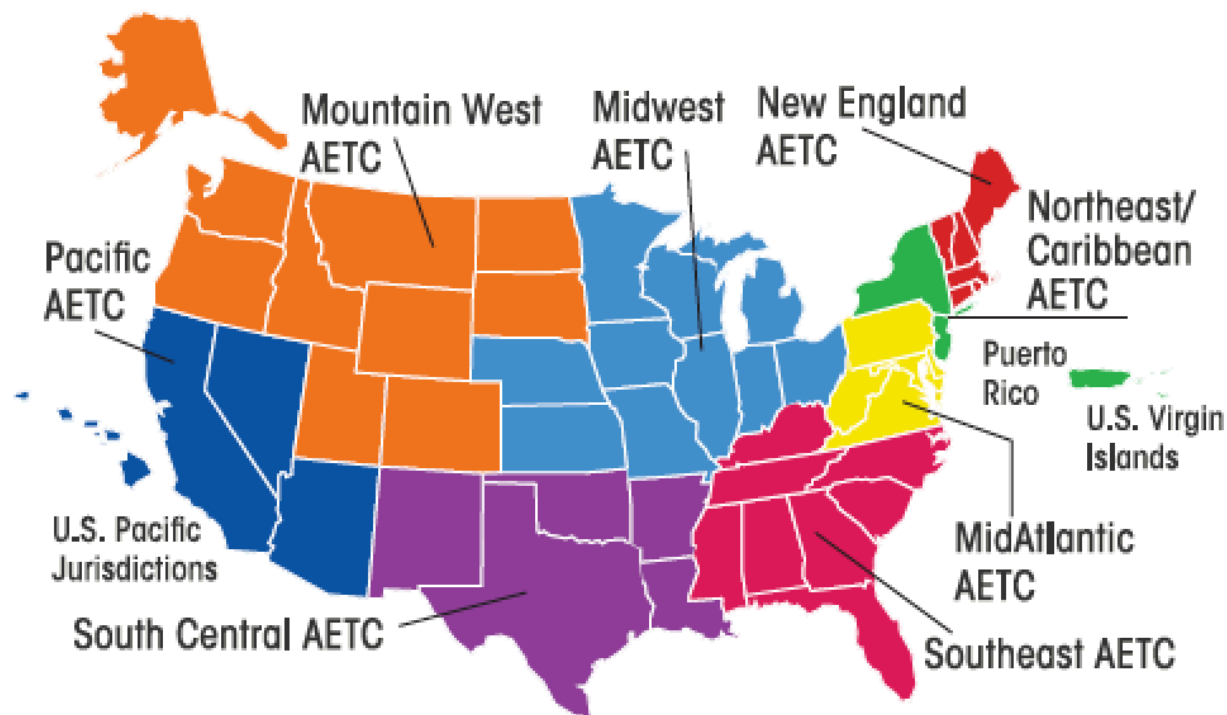
# AETC Program



VIRTUAL  
**2020 NATIONAL  
RYAN WHITE  
CONFERENCE ON  
HIV CARE & TREATMENT**

## REGIONAL

## NATIONAL



- National Coordinating Resource Center
- National Clinician Consultation Center

# Regional AETC Program Components



**Practice Transformation (PT)**

**Core Training**

**Interprofessional Education (IPE)**

**Minority AIDS Initiative (MAI)**

**Practice Transformation Expansion (PTE)  
(Optional)**

# Regional AETC Approaches



## Practice Transformation

- Individualized coaching for clinics to improve outcomes along the Continuum of Care
- FQHCs and RW settings

## Interprofessional Education

- Integrating HIV and Interprofessional Education into health profession schools: medical, nursing, pharmacy, behavioral health

## Core Training/TA

- Increasing knowledge, skills and behavior
- Enhancing workforce and quality of HIV care
- Along the continuum and comorbidities

## MAI Training/TA

- Increasing the capacity of minority providers and minority-serving providers



# MidAtlantic AETC: Addressing Stigma in Rural Areas



These strategies include:

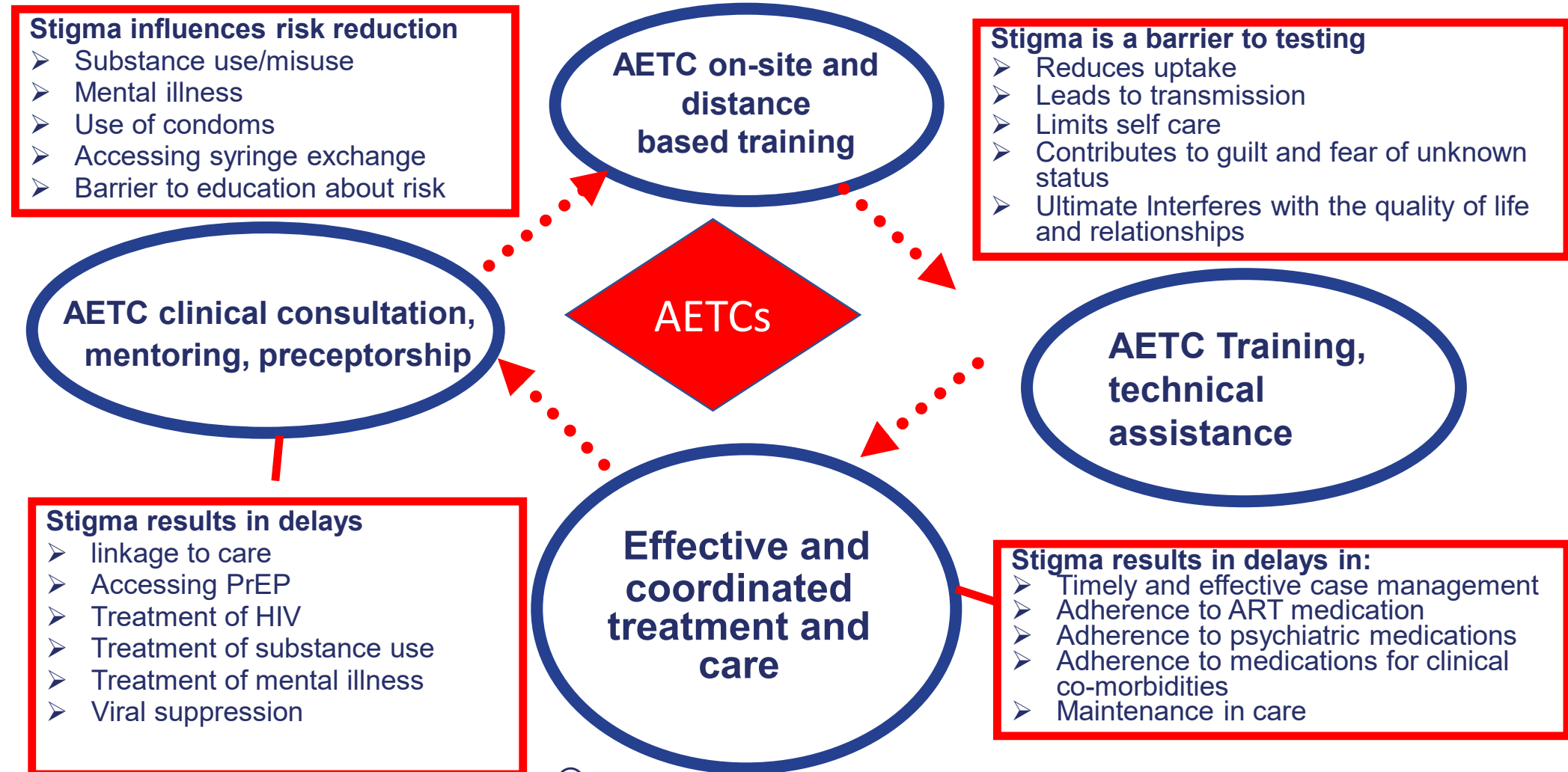
- Assist providers and program in implementing HIV-related stigma reduction standard operating procedures developed collaboratively with person with HIV and health care teams
- Encouraging and supporting health care providers and teams in integrating knowledge and skills learned into their work.
- Monitor changes in stigma by administering periodic surveys to persons with HIV or conducting focus groups and using the results to develop additional training and technical assistance for providers and programs.
- Inclusion of stigma as a topic for integration into most training programs since stigma is an issue not just for HIV but for co-occurring disorders such as, sexually transmitted infections, substance use, and mental illness.

# MidAtlantic AETC: Rural Privacy Challenges



- Rural communities are small and often have close-knit social networks which is a concern for persons with HIV and confidentiality
- For some persons with HIV, it can be difficult to seek HIV services in rural areas and may seek care elsewhere
  - May be seen accessing HIV, substance use, or mental health services
  - May work at an organization, hospital, or agency where HIV testing or treatment services are provided.
- For persons with HIV, the challenges of accessing services without disclosure may deter people from getting tested for HIV or seeking care

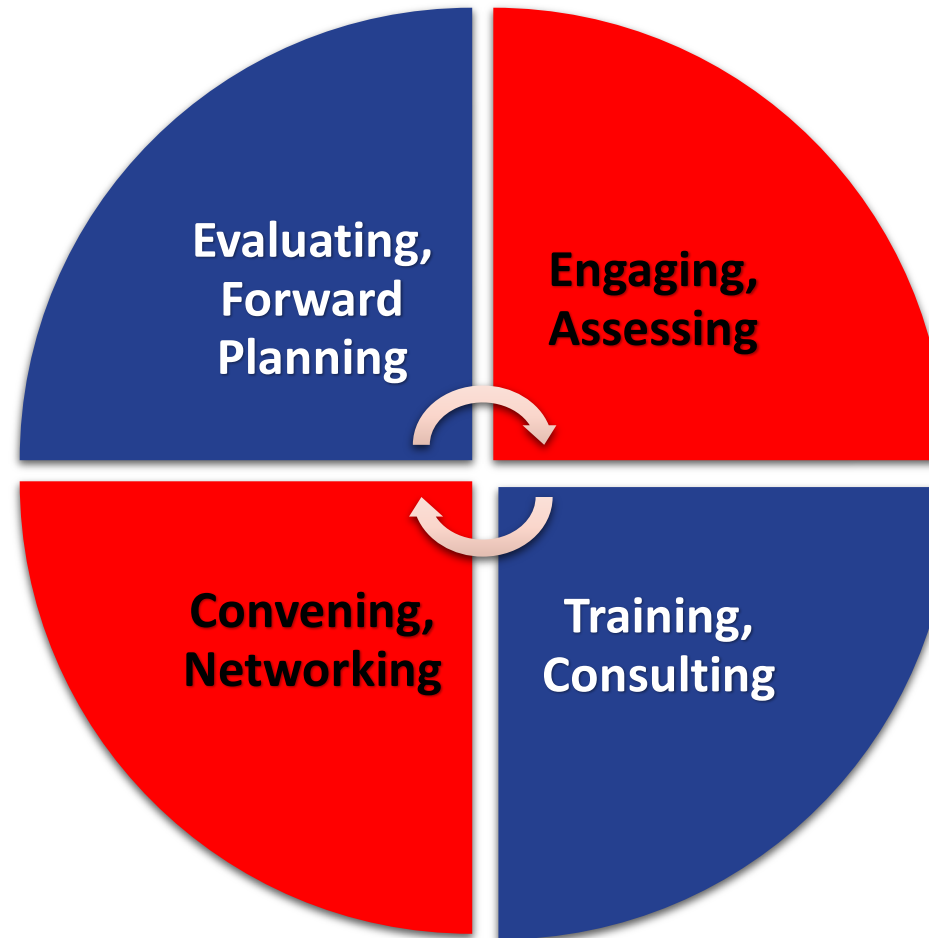
# Stigma as Barrier to Ending the HIV Epidemic



# MidAtlantic AETC Critical Incident: West Virginia Outbreak Response



- Continue to engage CDC and offer AETC assistance
- Continue to participate in calls, meetings, working groups
- Market relevant AETC programs via LEAAP and directly
- Offer to work on response plan for future outbreaks
- Engaged other federal training centers
- Ongoing networking with Cabell county to train: addiction centers, first responders
- Working with Valley health CHC to conduct training
- Participate in Opioid Steering Committee
- Offered use of MAAETC resources

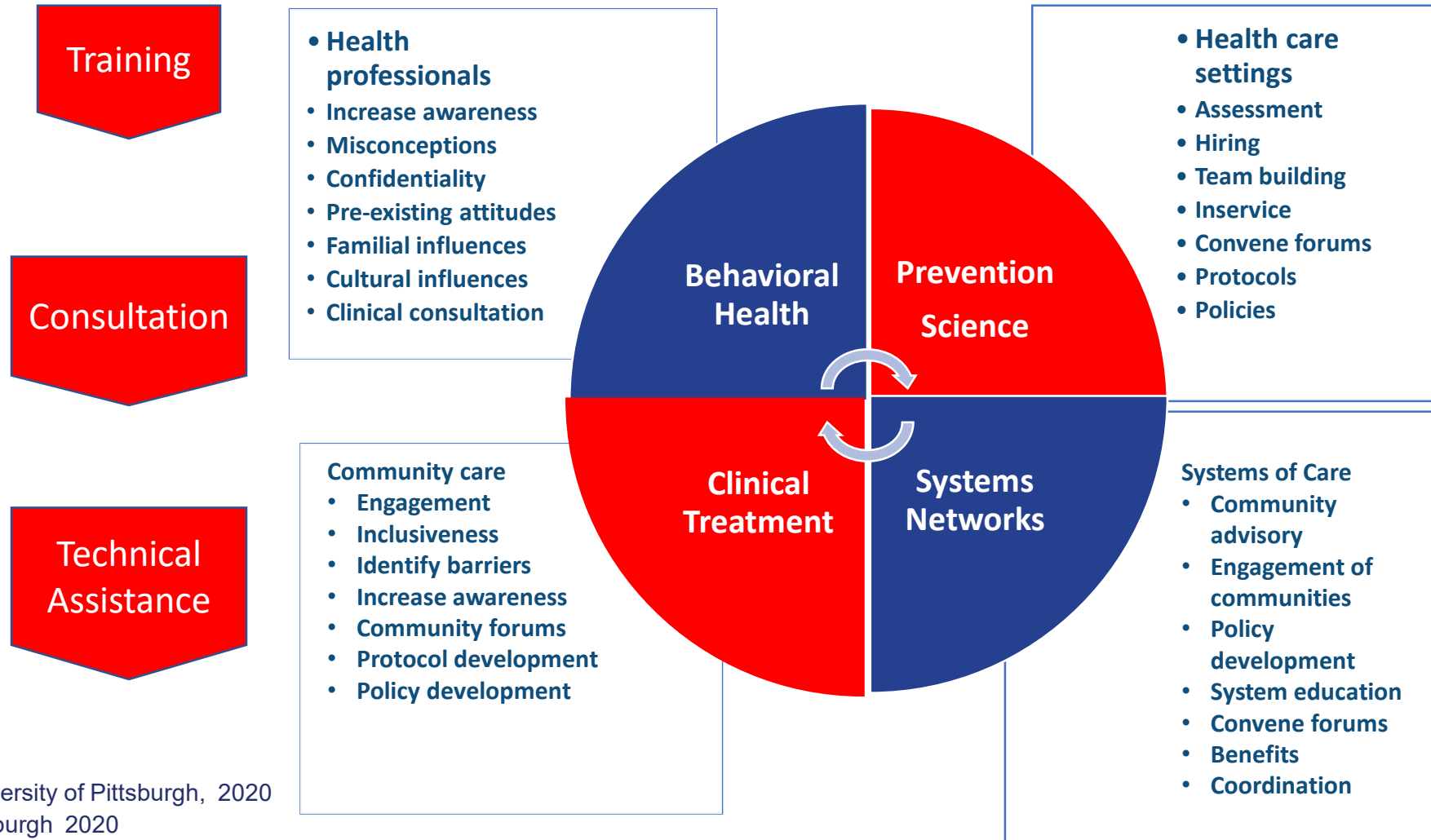


- Met with WV Health Dept
- Met with Cabell Co Health Dept
- Met with CDC representatives on ground
- Attended weekly calls convened by WV DOH and CDC
- Identified needs for training
- Identified clinicians for preceptorships
- Conducted rapid test training
- Training on linkage to care
- Integration of stigma discussion into training
- Physician attended preceptorship
- Provided linkage to MAAETC training

© L. Frank, University of Pittsburgh, 2019



# Stigma: AETC Interventions



# MAAETC Rural Ongoing Capacity Building



- Continuous assessment of need in rural areas due to changing health care structures, workforce
- Assessment of technology to increase access to training
- Recruitment of agencies, CHCs, hospitals to link to the MAAETC Learner Education and Practice Portal (LEAPP)
  - an interactive on-line platform for accessing guidelines, recommendations, journal articles, distance-based learning schedule, and archived education
- Participation in case-based educational consultations on clinical issues, specific populations, co-morbidities, HIV testing, harm reduction, and quality improvement
- Fostering and maintaining connections between rural providers, MAAETC faculty, and consultants
- Development of shared repertoire of approaches, tools, and strategies to develop interventions to reduce stigma, and other conditions that are stigmatized

# MIDATLANTIC AIDS EDUCATION AND TRAINING CENTER CONTACT INFORMATION



VIRTUAL  
2020 NATIONAL  
RYAN WHITE  
CONFERENCE ON  
HIV CARE & TREATMENT

Linda Rose Frank, PHD, MSN, ACRN, FAAN  
Principal Investigator and Program Director  
Professor of Infectious Diseases, Graduate School of  
Public Health, Medicine & Nursing,  
University of Pittsburgh  
130 DeSoto Street, 2120 Public Health  
Pittsburgh, PA 15213  
412-624-9118  
frankie@pitt.edu

[maaetc@pitt.edu](mailto:maaetc@pitt.edu)

[www.maaetc.org](http://www.maaetc.org)

[www.pitt.edu](http://www.pitt.edu)



University of  
Pittsburgh





VIRTUAL  
**2020 NATIONAL**  
**RYAN WHITE**  
**CONFERENCE ON**  
HIV CARE & TREATMENT

# Federal Resources and Community Initiatives to Reduce HIV-Related Stigma in Rural Areas

Lisa McKeithan  
CommWell Health



# Disclosures



- Lisa McKeithan has no relevant financial or non-financial interests to disclose.
- Disclosure will be made when a product is discussed for an unapproved use.
- This continuing education activity is managed and accredited by AffinityCE in cooperation with HRSA and LRG. AffinityCE, HRSA, and LRG Staff, as well as planners and reviewers, have no relevant financial or non-financial interests to disclose. Conflict of interest, when present, was resolved through peer review of content by a non-conflicting reviewer.
- Commercial support was not received for this activity.

# Learning Outcomes



- At the conclusion of this activity, participants will be able to:
  1. Recognize how stigma and discrimination can pose complex barriers to prevention, testing, treatment, and support for people living with or at risk for HIV in rural communities.
  2. Identify and utilize strategies to combat stigma in a rural healthcare setting
  3. Learn how community wide programs can be used in decreasing the negative impact of stigma

# CommWell Health



40 years of operation

Began as a night clinic for community farmworkers

Served three counties: Johnston, Sampson, Harnett

Rebranded in 2009 to CommWell Health

- Six counties across southeastern North Carolina

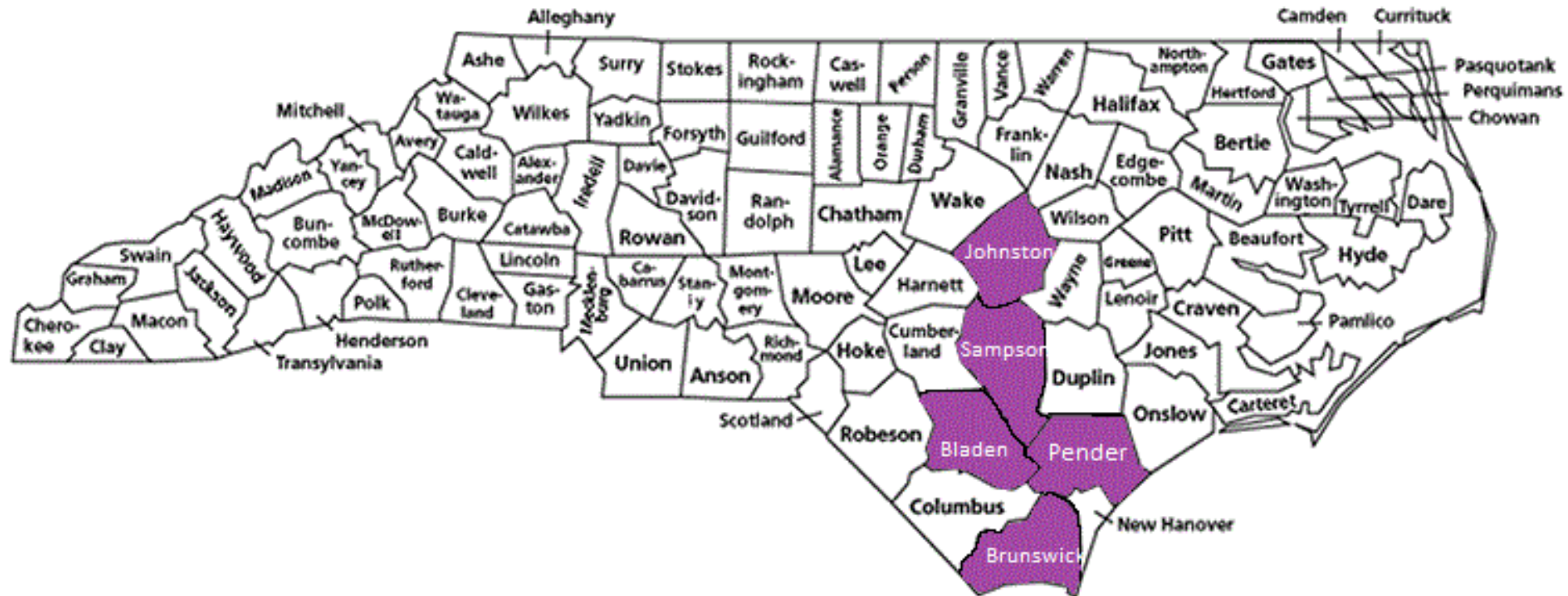
HIV/Ryan White Services - “Positive Life Program”

- HIV Counseling/Testing, Case Management 1987
- Ryan White Title IIIB – 1996
- Ryan White Title II (Part B) – 1997
- Ryan White Title III (Part C) – 2000
- Ryan White Title IV (Part D) – 2001

# CommWell Health – Service Area



VIRTUAL  
2020 NATIONAL  
RYAN WHITE  
CONFERENCE ON  
HIV CARE & TREATMENT



# Our MVV

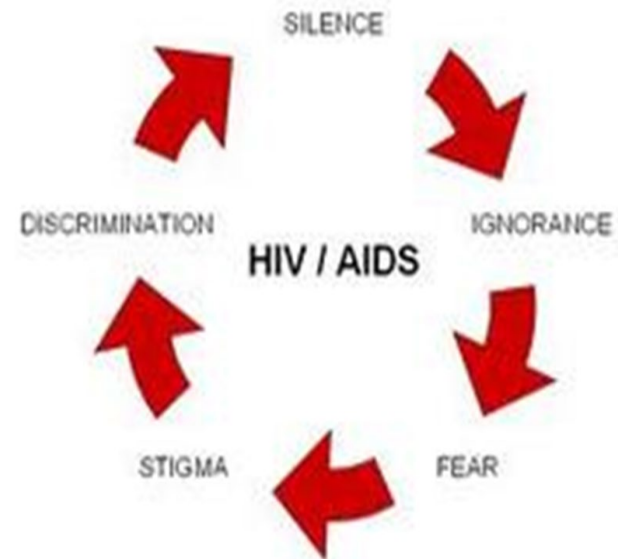
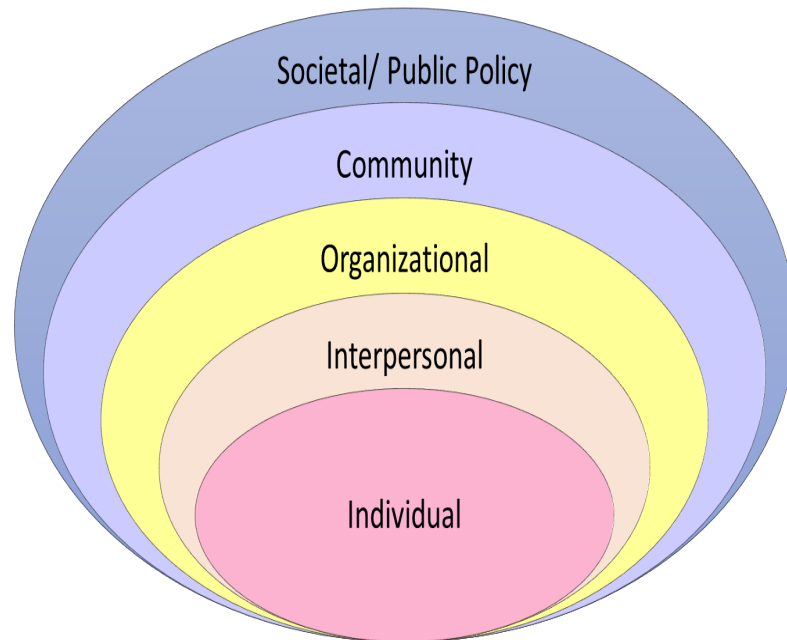
- Values
  - **Collaborative Leadership** - WE, not me
  - **Value of Valuing** - WE value the strengths and uniqueness of everyone
  - **Teamwork** - WE work together
  - **Integrity** - WE do the right thing
  - **Learning Environment** - WE question, WE learn, WE innovate
  - **Continuous Improvement** - OUR excellence tomorrow is greater than OUR excellence today!



# Socio-Ecological Framework HIV Stigma



VIRTUAL  
2020 NATIONAL  
RYAN WHITE  
CONFERENCE ON  
HIV CARE & TREATMENT





- Stigma
  - Fear
  - Anxiety
  - Access to Care
  - Treatment
  - Grief

# How does CWH address stigma?



Education



Language/Correct  
Terminology



Non-judgmental manner/Cultural Competency



Patient Satisfaction Surveys



# How does CWH address stigma?



## CommWell Health

- Waiting Rooms
  - MH Provider
  - Dental Hygienist
  - Nutritionist
- Patient Centered Medical Home
- Telehealth
- Eagle Meds

## Staff

- Code of Behavior/Conduct/Ethics
- Code of Conduct
- Code of Ethics

## SPNS/ NC REACH

(North Carolina Rurally Engaging and Assisting Clients who are HIV positive and Homeless)

- Case managers
  - Network Navigators
    - Assessing whether and how clients are experiencing stigma
    - Helping clients address internal and external stigma through Motivational Interviewing and Strengths Based Counseling approaches
    - Providing advocacy on behalf of clients
    - Collaborating with and educating internal and external partners on an ongoing basis

# Consumer Advisory Board



- Ensures patients' voice guides service delivery.
  - Recognizes the unique needs and barriers related to health, stigma, and discrimination

# CWH's Commitment to Our Community



VIRTUAL  
2020 NATIONAL  
RYAN WHITE  
CONFERENCE ON  
HIV CARE & TREATMENT



## COMMUNITY COVID-19 TESTING

### NO APPOINTMENT NEEDED

CommWell Health is offering no-cost COVID-19 testing to the public.

**June 11: 10 am - 3 pm**

**New Hope Missionary Baptist Church**

1504 White Plains Church Rd.  
Clarkton, NC 28433

**June 18: 10 am - 3 pm**

**East Arcadia Senior Resource Center**

1472 S East Arcadia Rd.  
Hazelwood, NC 28458

**June 25: 10 am - 3 pm**

**Mount Vernon Christian Church**

300 North Lombard Street  
Clayton, NC 27520

COVID-19 HELPLINE: 910-567-7114

- Festivals
- Health Fairs
- Faith Based Community
- Local Business

# Thank you



## Lisa McKeithan, MS, CRC

*Director of the Positive Life Program  
& NC REACH*

*PO Box 227,*

*Newton Grove, NC, 28366*

*O: (910)567-6194 ext. 6054 M:  
(910)818-1237*

*[www.commwelhealth.org](http://www.commwelhealth.org)*



# Federal Resources

1. “Cultural Humility & Reducing Stigma and Discrimination” Provider Handbook
  - <https://www.seaetc.com/cultural-humility-reducing-stigma-and-discrimination-provider-handbook/>
2. Stigma Toolkit: Addressing Stigma: A Blueprint for Improving HIV/STD Prevention and Care Outcomes for Black and Latino Gay Men
  - <https://www.nastad.org/resource/stigma-toolkit-addressing-stigma-blueprint-improving-hivstd-prevention-and-care-outcomes>
3. Transgender HIV/AIDS Health Services Best Practices Guidelines
  - <https://targethiv.org/sites/default/files/file-upload/resources/tgguidelines.pdf>
4. Southeast Practice Transformation Expansion Project (SEPTEP)
  - <https://aetc.adobeconnect.com/a983389486/paleq7sus2mi/?proto=true>
5. Federal Office of Rural Health Policy’s Rural HIV AIDS Prevention and Treatment Toolkit- Stigma
  - <https://www.ruralhealthinfo.org/toolkits/hiv-aids/4/stigma>
6. CDC’s Let’s Stop HIV Together Campaign
  - <https://www.cdc.gov/stophivtogether/campaigns/index.html>



## How To Claim CE Credit

- If you would like to receive continuing education credit for this activity, please visit:
  - [ryanwhite.cds.pesgce.com](https://ryanwhite.cds.pesgce.com)

# Contact Information

---

**Ijeamaka Okoye, MPH**

**Division of Community HIV/AIDS Programs**

**Email: [lokoye@hrsa.gov](mailto:lokoye@hrsa.gov) Phone: 301-945-9638**

**Taria Poteat, MPH**

**Office of Program Support**

**Email: [Tpoteat@hrsa.gov](mailto:Tpoteat@hrsa.gov) Phone: 301-945-3975**

**HIV/AIDS Bureau (HAB)**

**Health Resources and Services Administration (HRSA)**

**Web: [hab.hrsa.gov](http://hab.hrsa.gov)**





# Connect with HRSA

Learn more about our agency at:

[www.HRSA.gov](http://www.HRSA.gov)



[Sign up for the HRSA eNews](#)

FOLLOW US:

