

# The Required and Enhanced Estimates for RWHAP Unmet Need Reporting

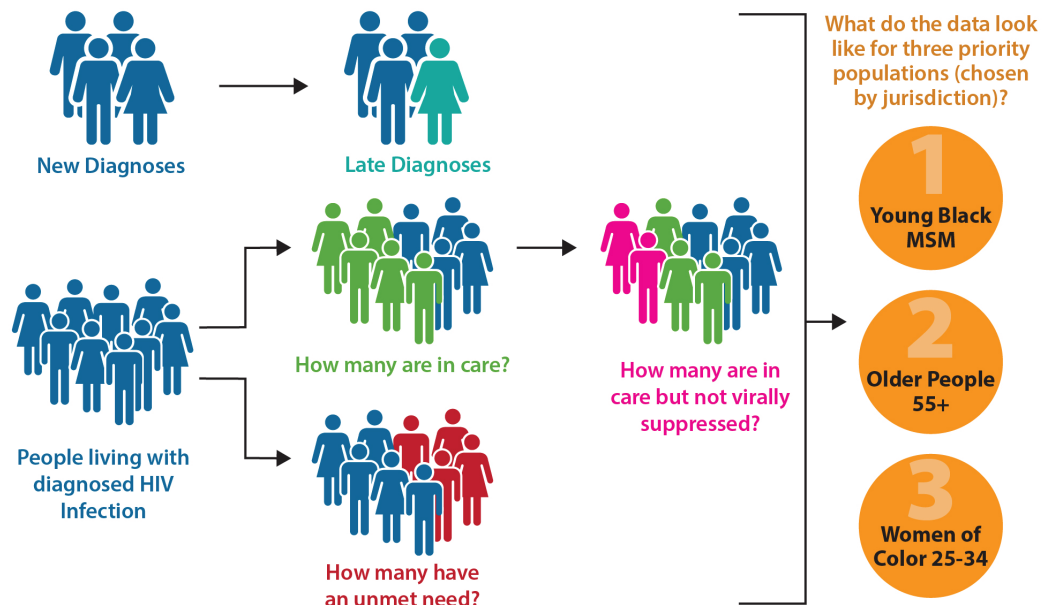
Estimating Unmet Need for HIV primary medical care is a requirement of the Ryan White CARE Act Amendment of 2000. In 2020, Health Resources and Services Administration HIV/AIDS Bureau (HRSA HAB) released the revised Unmet Need Framework, reflecting improvements in data systems and changes in the HIV epidemic. The methodology has both required and enhanced estimates and analyses. Required estimates and analyses use HIV surveillance data, while enhanced estimates and analyses use both HIV surveillance and RWHAP data and may also utilize other data for care patterns. The required estimates and analyses are the minimum requirement for all recipients; HRSA HAB encourages all recipients to do enhanced analyses if possible.

This fact sheet provides an overview of the required and enhanced estimates and analyses. For more information, review the [Instruction Manual](#) as well as the available resources at [TargetHIV](#).

## Required Estimates and Analyses

There are three components of the required estimates and analyses:

- **New diagnoses:** Number of people in the jurisdiction with HIV diagnosed in the **most recent calendar year** based on residence at time of diagnosis.
- **Late diagnoses:** Number of people with late diagnosed HIV in the **most recent calendar year** in the jurisdiction based on residence at time of diagnosis.
- **Population Size:** Number of people living with diagnosed HIV infection in the jurisdiction based on most recent known address who had an HIV diagnosis or an HIV-related lab data reported to the HIV surveillance program during the **most recent five calendar year period**.



For the required estimates and analyses, complete care pattern definitions are noted below.

- **Met Need (in care):** Number of people living with diagnosed HIV infection in the jurisdiction with a CD4 test or VL test in the **most recent calendar year**.
- **Unmet Need:** Number of people living with diagnosed HIV infection in the jurisdiction based on most recent known address without any CD4 or VL test in the **most recent calendar year**.
- **Not virally suppressed:** Number of people living with diagnosed HIV infection in the jurisdiction who are in care and whose most recent viral load test result was  $\geq 200$  copies/mL in the **most recent calendar year**.

Jurisdictions must complete unmet need estimates and analyses for the overall HIV population as well as **three priority populations**. Priority populations are chosen by the jurisdiction.

## Enhanced Estimates and Analyses

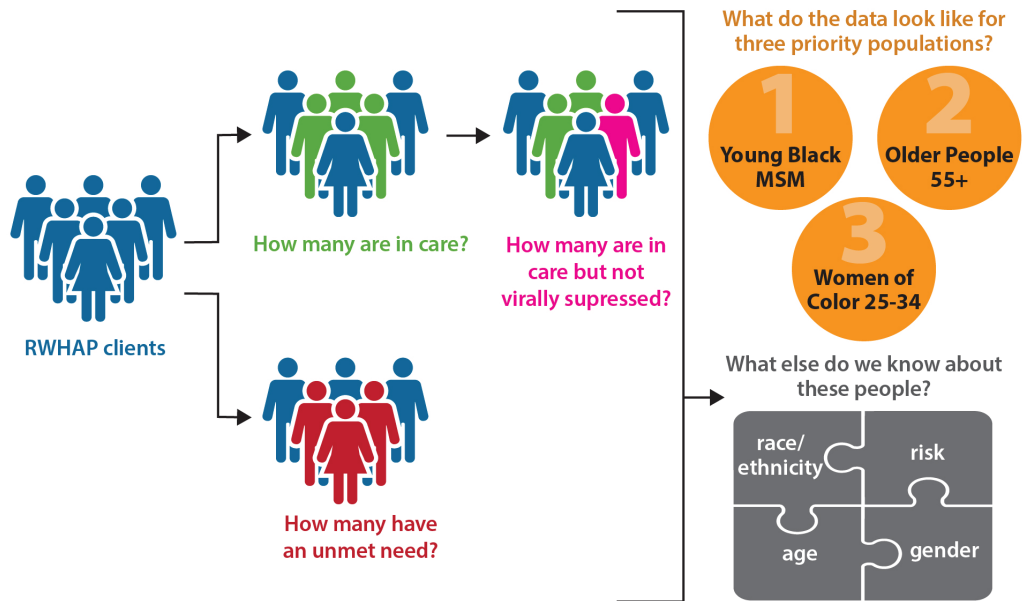
Enhanced estimates and analyses include everything in the required estimates and analyses, but add additional estimates and analyses including use of RWHAP data for estimating unmet need and in care not virally suppressed. In addition, RWHAP recipients can complete subpopulation analyses for both HIV surveillance and RWHAP data, and can also choose to link databases. Recipients can choose to complete all or part of the enhanced estimates and analyses.

There is one additional component for the enhanced estimates and analyses:

- **RWHAP clients:** Number of RWHAP clients in the jurisdiction who received any RWHAP or RWHAP-related funded service in the **most recent calendar year**.

For the enhanced estimates and analyses, complete care pattern definitions are noted below.

- **Met need (in care):** Number of RWHAP clients in the jurisdiction with a CD4 test or VL test or OAHS visit in the **most recent calendar year**.
- **Unmet need:** Number of RWHAP clients in the jurisdiction without any CD4 or VL test or OAHS visit in the **most recent calendar year**.
- **In care, Not virally suppressed:** Number of RWHAP clients in the jurisdiction who are in care and whose most recent viral load test was  $\geq 200$  copies/mL in the **most recent calendar year**.



Jurisdictions must complete the required unmet need estimates and analyses for RWHAP clients as well as three priority populations. Priority populations are chosen by the jurisdiction.

Subpopulation estimates and analyses by characteristics such as current gender identity, age, race/ethnicity, transmission category, and geographic area of residence) for HIV surveillance and RWHAP data may also be completed.

### Additional resources:

- Not sure if you can do the Enhanced Estimates? Review the [Feasibility of Required vs. Enhanced Estimates and Analysis for Estimating Unmet Need for HIV Primary Medical Care](#) document. This document will help you determine if you can conduct the Enhanced estimate. The table outlines the factors that influence the feasibility of conducting the Required or Enhanced Unmet Need estimates.
- Ready to get started? Download the [Estimating Unmet Need for HIV Primary Medical Care – Preparation Plan](#). This form is designed to assist RWHAP Part A and B recipients in creating a plan to complete the requirement of Estimating Unmet Need for HIV Primary Medical Care. Download and print the form to make notes for each step of the plan.
- You'll also need the [Unmet Need Instruction Manual](#) and the [Required Reporting Templates and Optional Calculation Tables Package](#).