

CALLING ALL CABS: CONSUMER-LED COMMUNITY ENGAGEMENT

2018 Ryan White Conference on HIV Care
and Treatment



Acknowledgements



Joe Green



Grissel Granados



Ricky Rosales

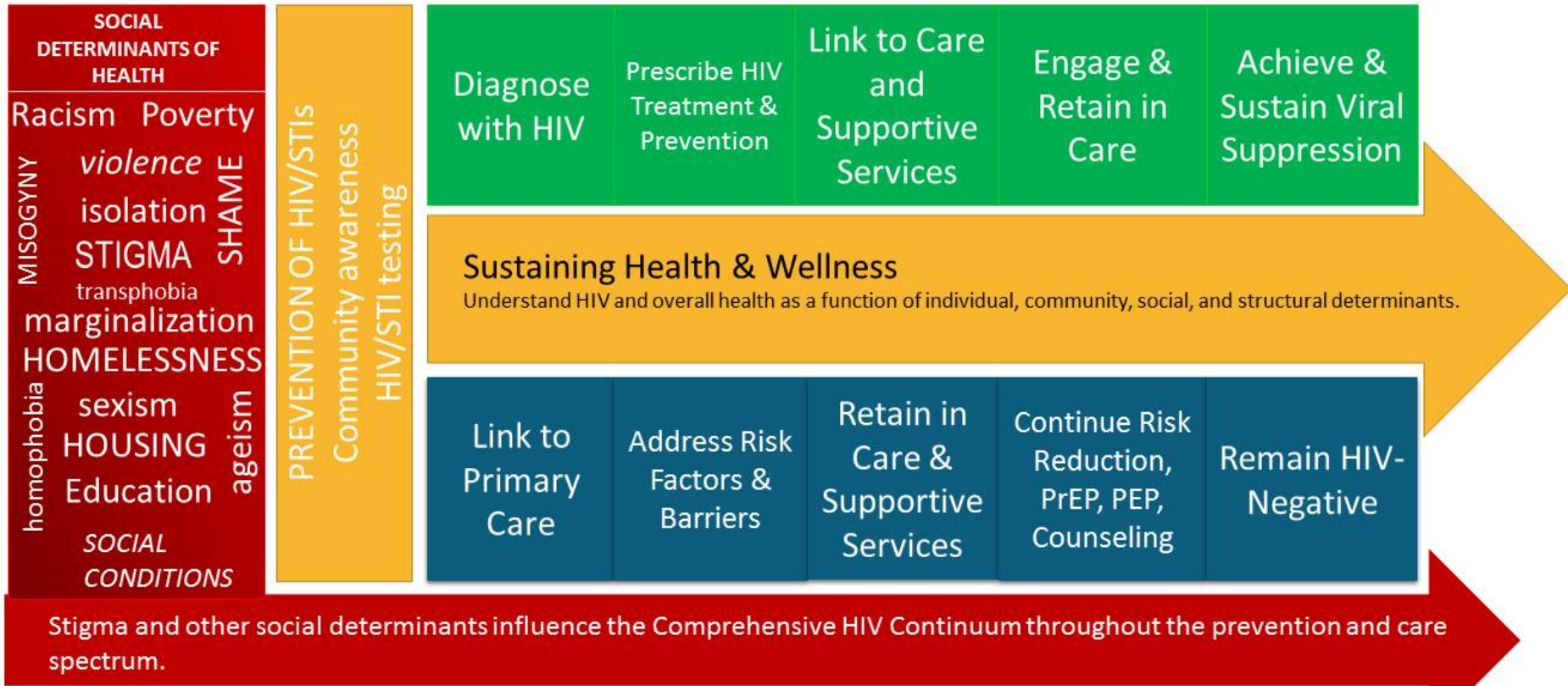


Al Ballesteros

Commission on HIV (COH)

- Integrated HIV/STD prevention and care planning body
- Board appointed members
- 51-members—ongoing member recruitment
- Co-chairs elected by the council
- 5 standing committees
 - Planning, Priorities and Allocations (PP&A)
 - Standards and Best Practices (SBP)
 - Operations
 - Public Policy
 - Executive Committee

**Los Angeles County Commission on HIV
Comprehensive HIV Continuum Framework (Final Approved 12.8.16)**



LEGEND: The connected boxes depict the complementary and supportive nature of primary and secondary prevention in controlling the HIV/STI disease burden. The green boxes show the HIV/AIDS treatment cascade (PLWHA) while the blue boxes depict the prevention continuum (HIV-negative). Both continua are equally important in decreasing new HIV/STI infections and sustaining health and wellness for PLWHA and those at risk for acquiring HIV/AIDS. The yellow arrow acknowledges that sustaining health and wellness is the ultimate goal for all people receiving HIV-related services, regardless of their status. The goal extends beyond achieving viral load suppression or maintaining a negative serostatus.



LA
COUNTY
HIV
ONCE AND FOR ALL

LOS ANGELES COUNTY HIV/AIDS STRATEGY FOR 2020 AND BEYOND



COUNTY OF LOS ANGELES
Public Health
VISION OF HIV AND AIDS PROGRAMS

Strategy Goals by 2022

Reduce annual HIV infections to 500

- Increase access to biomedical prevention
- Increase workforce capacity of healthcare and CBOs
- Decrease syphilis and gonorrhea among groups at risk for HIV

Increase proportion of Persons Living with HIV who are diagnosed to at least 90%

- Normalize HIV testing
- Develop strategies to address health inequities

Increase viral suppression of PLWH to at least 90%

- Coordinated medical treatment including seamless testing, disclosure and linkage to care
- Support holistic treatment and programming focused on social determinants of health

LACHAS and Role of COH



Monitor and advice the Board of Supervisors on LACHAS implementation



Facilitate ongoing community engagement



Promote LACHAS and provide space for meaningful conversation and learning



Encourage ongoing community feedback on Strategy

Consumer Caucus

- Open to consumers of HIV prevention and care services
- PLWHA leadership
- Partnered with University of CA Los Angeles Family AIDS Network
- Supported by PC leadership and staff to implement CAB Meet 'N Greets





- Numerous Community Advisory Boards throughout the County
- Share information, network and promote consumer engagement at all levels (beyond the local planning council)
- Offer training and resources
- Invitation letter from PC Co-Chairs in Spanish
- Have fun

CAB Meet 'N Greet

- Convened 3 = 50 participants
- 2 in English y 1 en Español
- Spanish/English interpretation was available at all 3 events
- Partnered with local agencies and pharmaceutical sponsors to provide food
- Shared HIVConnect.org for local HIV services and resources
- Held at different venues
- Promoted by consumers and agencies
- Harnessed feedback on HIV/STD needs and opportunities

Training Topics

- PrEP
- Undetectable = Untransmittable (U=U)
- Treatment as Prevention
- Los Angeles County HIV/AIDS Strategy
- HIV and Sexual Conversation in the Latino Community

Approached speakers from the Commission

Tips for Success

- Select best messenger(s) for the audience
- Integrate tours of site hosts
- Permission to laugh
- Seek clarification on objectives along the way
- Step back
- Offer additional training and coaching for consumers to build confidence in public speaking and presenting technical matters

Join the movement in ending the HIV/AIDS epidemic in Los Angeles County, once and for all.

Visit www.LACounty.HIV



LOS ANGELES COUNTY
COMMISSION ON HIV



Cheryl Barrit, Executive Director
Los Angeles County Commission on HIV
cbarrit@lachiv.org
Commission website: <http://hiv.lacounty.gov>