

The logo features a large, stylized red graphic element on the left, resembling a square with a horizontal bar extending to the right and a vertical bar extending downwards. The year '2018' is written vertically in light blue text within the vertical bar. To the right of the graphic, the word 'NATIONAL' is written in light blue, uppercase letters. Below 'NATIONAL', the name 'RYAN WHITE' is written in large, bold, white, uppercase letters. Underneath 'RYAN WHITE', the text 'CONFERENCE ON HIV CARE & TREATMENT' is written in light blue, uppercase letters. The entire logo is set against a dark blue background with a vertical red bar on the far left and a horizontal red bar at the bottom.

2018 NATIONAL
RYAN WHITE
CONFERENCE ON HIV CARE & TREATMENT

Community Based Dental Partnership Program

Mark Schweizer, DDS MPH

Director of Special Projects

Associate Professor

Nova Southeastern University College of Dental Medicine

Project Director Community Based Dental Partnership Program Part F

Dental Director Southeast AIDS Education and Training Center



Disclosures

Presenter(s) has no financial interest to disclose.

This continuing education activity is managed and accredited by AffinityCE/Professional Education Services Group in cooperation with HRSA and LRG. PESG, HRSA, LRG and all accrediting organization do not support or endorse any product or service mentioned in this activity.

PESG, HRSA, and LRG staff as well as planners and reviewers have no relevant financial or nonfinancial interest to disclose.

Commercial Support was not received for this activity.

NOVA SOUTHEASTERN
UNIVERSITY

NSU
Florida



Students performing procedures and participating in community events

The College of Dental Medicine fosters leadership and excellence in dental education through a commitment to recruitment and retention of the highest caliber of self-motivated students, residents, and faculty members innovative teaching methods, research, scholarship, professionalism, and ethical principles continuing education, service to the local, national, and international communities.

The College of Dental Medicine has a special commitment to educate students and residents to provide culturally sensitive care to the underserved and special needs populations.



Broward Community & Family Health Centers, Inc. (BCFHC)



Working with clients to verify and maximize benefits

- A non-profit organization
- Committed to providing accessible comprehensive high quality primary and preventive care services to all persons with dignity and respect
- Focus is on preventive care and health education to promote healthier lifestyles in the communities

Program Overview



- The program is located in Broward County, Florida which is the epicentre of new infections in the United States.
- Broward County has experienced among the highest rates of new HIV and AIDS cases in the United States. Disproportionately impacted groups include Men Who Have Sex with Men (MSM) of all races and ethnicities and Women of Color.

Program Overview



- Broward Community and Family Health Center serves a large number of African-American clients who are disproportionately affected by the increase in new infections.
- 60% being Black or African American. A majority of the clients were at or below the Federal poverty level.
- The focus of the program is on preventive care and health education to promote healthier lifestyles in the communities the program serves.

Innovative Strategies



- Broward Community and Family Health Center and Nova Southeastern University are well established in the community and have extensive networks for community outreach.
- University can provide access to comprehensive dental care including oral-maxillofacial surgery including biopsies, pathology services so any oral health need of patients can be diagnosed and treated.

Innovative Strategies



- The Project Director is also the Dental Director for the Southeast AIDS Education and Training Center (AETC) and has extensively collaborated with the AETC through live trainings, webinars, and print materials to provide an extensive and comprehensive HIV training program for the students.
- Broward Community and Family Center in addition to the dental program established through the collaboration, provides medical, mental health, and case management services to provide a continuum of care for the patients. Issues like barriers to transportation, the need for food services, and homelessness are often addressed in the population.

Best Practices

- The most unique practice of the program is the collaboration of both partners to provide a total continuum of care for all patients in a diverse and culturally sensitive and welcoming environment.
- An emphasis is placed on both diagnosis of new HIV cases, medication adherence, and retention in care. Both partners collaborate closely for all clients. Newly diagnosed clients are linked directly to care and begin treatment immediately through the “Test and Treat” program at Broward Community and Family Health Center.

Best Practices

- Medical model of care
- Clients lost to care are addressed by both organizations. Through the education program both student providers of care and health care professionals are stressing the importance of linking all HIV clients to oral health care services.
- The outcomes of the program reflect the dedication and unique collaboration of both partners with retention rates and viral suppression rates that exceed national statistics.

Case Presentation

44 year old Female/Haitian
Denies any history of HIV/AIDS

Current Medication List:

- Singular
- Proair
- Pantoprazole Sodium 40mg (GERD)
- Fluticasone propionate (allergies)
- Hydroxyzine Hcl 25mg (anxiety)

Case Presentation



Lesions observed upon presentation for routine dental visit
Differential Diagnosis: Kaposi Sarcoma, Melanoma, Squamous Cell Carcinoma, HPV

Case Presentation



- Patient referred to Nova Southeastern University for Evaluation
- Consulted with physician and ordered full lab panel including HIV test, CD4, Viral Load
- Referred to Oral Surgery for Biopsy
- Linkage to Case Manager/Mental Health Services

Case Presentation

Mode of Transmission/Heterosexual

Date of Diagnosis 1/1/2011

On antiviral therapy in 2013 during pregnancy/child born HIV- then discontinued

Date new antiretroviral therapy started 1/20/2018

CD4 10

Viral load 79,500

Current Medication

Singular, Proair, **Genvoya, Bactrim DS 800, Azithromycin 600mg**, Pantoprazole Sodium 40mg (GERD), Amoxicillin 875, Fluticasone propionate (allergies), hydroxyzine Hcl 25mg (anxiety), **Permethrin 5% (scabies,lice)**

Case Presentation

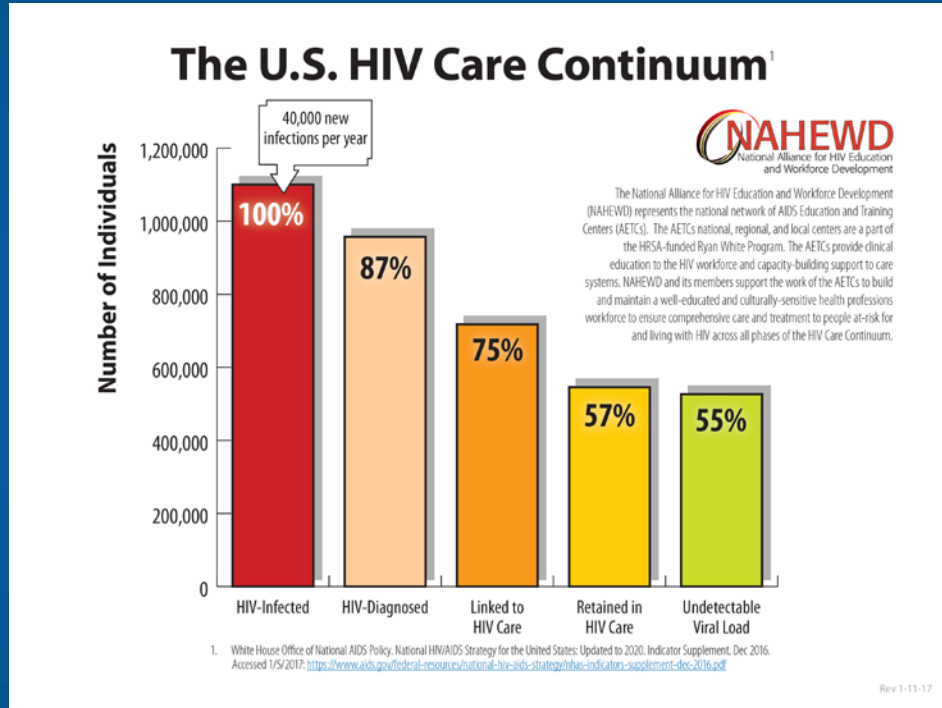


Diagnosis of Kaposi's Sarcoma on Tongue and Roof of Mouth

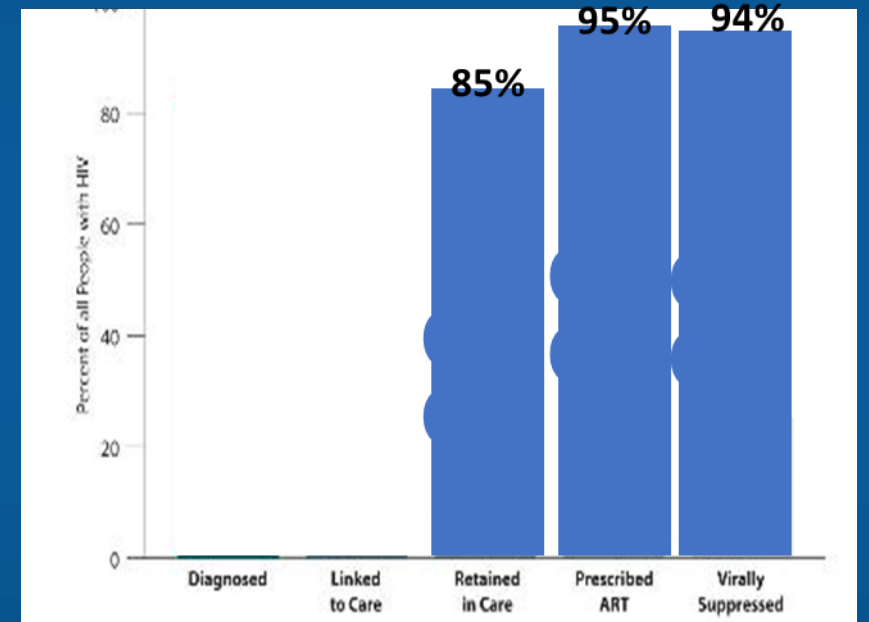
Barriers

- Time to develop a new relationship and agreements
- Timeline for site development and construction are difficult
- Limited Funding from Program
- Limited access to additional funding sources

Outcomes



Engaged in Selected Stages of the Continuum of HIV Care Florida Oral Health Care





2018 NATIONAL
RYAN WHITE
CONFERENCE ON HIV CARE & TREATMENT



Obtaining CME/CE Credit

If you would like to receive continuing education credit for this activity, please visit:

<http://ryanwhite.cds.pesgce.com>