

The logo features a large, stylized red graphic element on the left, resembling a square with a horizontal bar extending to the right and a vertical bar extending downwards. The year '2018' is written vertically in light blue text within the vertical bar. The word 'NATIONAL' is in light blue text above the horizontal bar. The name 'RYAN WHITE' is in large, bold, white text across the middle. Below it, 'CONFERENCE ON HIV CARE & TREATMENT' is written in light blue text.

2018 NATIONAL
RYAN WHITE
CONFERENCE ON HIV CARE & TREATMENT

Planning CHATT:

Capacity Building for RWHAP Part A Planning Councils and Planning Bodies

Mira Levinson, Aisha Moore, Chris La Rose, Deborah Dean, and Emily Gantz McKay*

JSI Research & Training Institute, Inc. (JSI)

* EGM Consulting

Agenda

- Project overview
- What we provide
- Training Guide activity
- What's next?
- Questions and answers

Learning Objectives

By the end of this session, participants will be able to:

- Discuss the important role RWHAP Part A planning councils/planning bodies (PC/PB) play in the RWHAP, including the importance of representation by people living with HIV
- Explain how Planning CHATT supports the work of planning council/planning body members, staff and RWHAP Part A recipients
- Locate and share Planning CHATT resources with their local planning council/planning body

Introducing Planning CHATT

Community HIV/AIDS TA and Training for Planning (Planning CHATT)

- Planning CHATT builds the capacity of Ryan White HIV/AIDS Program (RWHAP) Part A planning councils and planning bodies (PC/PB) across the U.S.
- Our goal is to help PC/PBs meet legislative requirements, strengthen consumer engagement, and increase the involvement of community providers in HIV service delivery planning

Why Planning Councils?

- **Why are you involved in your planning council/ planning body?**
- **Why do you stay involved?**
- **What do you tell other people about planning councils/planning bodies?**

Uniqueness and Value of Planning Councils¹

- Focus on community health planning for HIV care and treatment
- A deliberate effort to involve diverse community members in “an open public process designed to improve the availability, accessibility, and quality of healthcare services in their community”
- This process involves “identifying community needs, assessing capacity to meet those needs, allocating resources, and resolving conflicts”
- People who serve as planning council members make a vital contribution to their communities by helping to strengthen and improve the service system for people living with HIV

1. Planning Council Primer, 2018

Uniqueness and Value of Planning Councils¹ *(cont.)*

- The only federal health or human services program with a legislatively required planning body that is the decision maker about how funds will be used
- Uniquely well-defined membership composition, and high level of consumer participation (at least 33 percent) results in:
 - Community involvement in decision making about HIV services
 - A consumer voice in decisions about services
 - Collaboration among diverse stakeholders
 - Positive impact on the service system

1. Planning Council Primer, 2018

Activity: What is Your Role?

- **Chair/Co-Chair**
- **Member**
- **Planning Council Support (PCS) staff**
- **CEO**
- **Something else?**

Planning CHATT



Questions for Participants:

- ▶ Have you heard of Planning CHATT?
- ▶ Are you on the Planning CHATT email list?
- ▶ Have you participated in any of our webinars?
- ▶ Is your planning council or planning body using any of the print materials from the targethiv.org library?
- ▶ Have you shared any of these resources with others in your EMA or TGA?

Written Materials and Resources



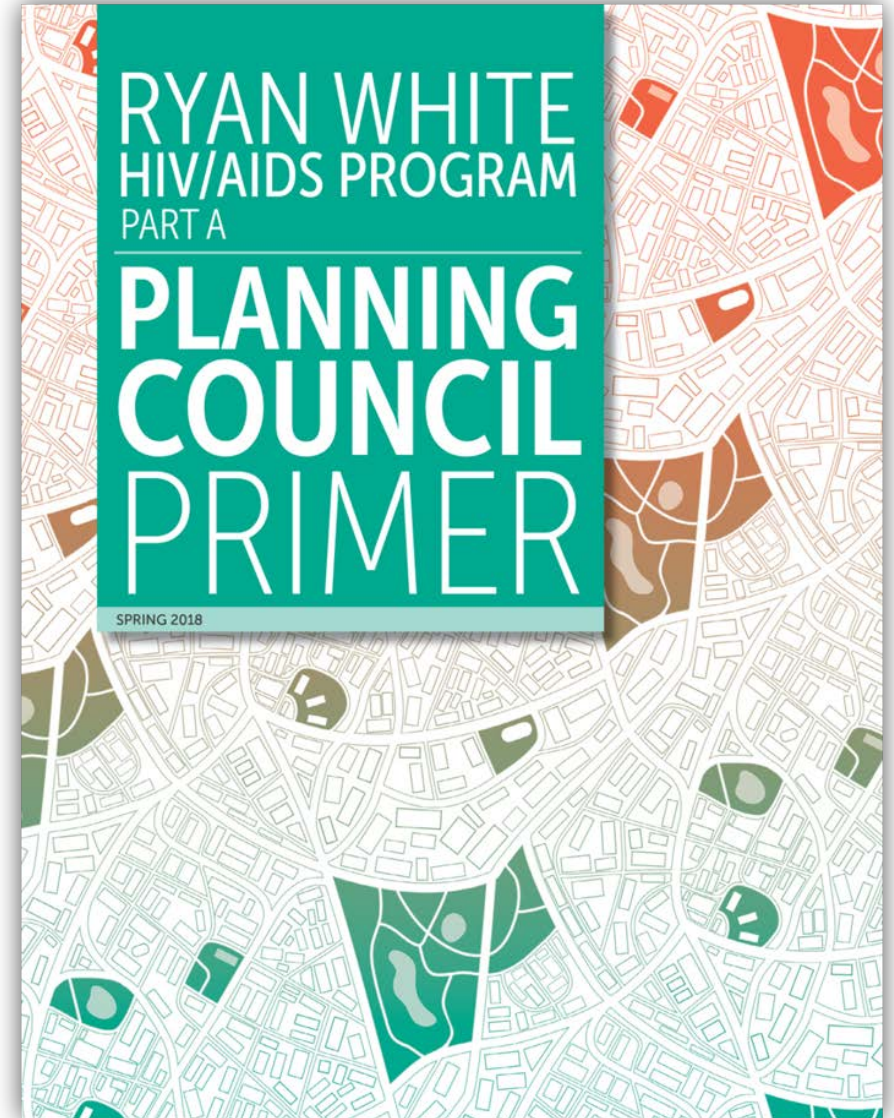
Planning Council Primer

Updated May 2018

A basic reference to help prepare members to actively engage in planning council activities, and effectively carry out their legislatively defined community health planning duties

TargetHIV.org/planning-CHATT

Available in English and Spanish



Training Guide for RWHAP Planning Councils/Planning Bodies: Selected Modules Available Now

- ▶ Intended to help prepare new PC/PB members for full participation in RWHAP Part A planning and decision-making
- ▶ For use by PC/PB support staff, leaders, and recipient personnel who provide PC/PB orientation and training – ultimate audience is PC/PB members and committee members
- ▶ Ten modules, designed to impart basic “101” knowledge and skills every PC/PB member needs to participate effectively in his/her first annual planning cycle

Training Guide: Module Topics

1. Understanding the Legislation
2. Roles and Responsibilities of PC/PBs and Recipients
3. Overview of the Annual Planning Cycle
4. Needs Assessment
5. Integrated/Comprehensive Planning
6. Priority Setting and Resource Allocation
7. Other PC/PB Roles for Maintaining and Improving a System of Care
8. PC/PB Structure and Governance
9. Working Together: Effective Committees and PC/PB Meetings
10. Data-based Decision Making: Understanding, Assessing, and Using Data

Major Components of a Module

- ▶ Each module – and for modules covering multiple topics, each major topic – includes:
 - Notes for trainers
 - Sample PowerPoint slides
 - At least one experiential activity
 - At least one reference handout

Module Component: Notes for Trainers

Ryan White HIV/AIDS Program Part A Planning Council/Planning Body Training Guide

Module 1: Understanding the Legislation

GETTING READY: NOTES FOR TRAINERS

MODULE SCOPE

Purpose

To familiarize Ryan White HIV/AIDS Program (RWHAP) Part A planning council/planning body (PC/PB) members with the legislation authorizing the RWHAP, its various "Parts," why it is needed, and how it has evolved over the years as the epidemic has changed and new treatments have been developed.

Learning Objectives

Following training, participants will be able to:

1. Describe how the RWHAP legislation evolved from 1990 to 2009 to reflect changes in the epidemic and advances in prevention and treatment
2. Identify the 3 largest sources of funding for HIV care and treatment in the U.S.
3. Identify and differentiate the 5 RWHAP Parts
4. Describe at least 3 important similarities between Part A and Part B
5. Describe at least 4 key characteristics of Part A

Content Overview

History and Evolution of RWHAP Legislation

- RWHAP as a major source of funding for HIV care in the U.S.
- Appropriations over time by RWHAP Part
- Purpose of the legislation
- RWHAP and the HIV timeline
- Evolution of the legislation in the context of a changing epidemic and advances in treatment

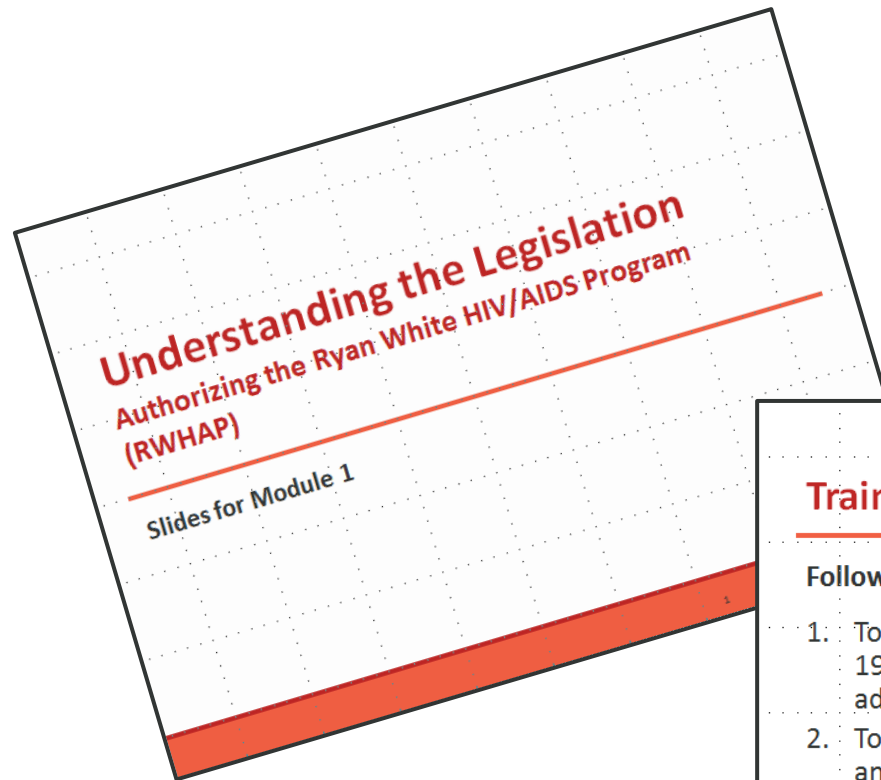
Overview of RWHAP Parts

- Uses of RWHAP funds
- Description of each RWHAP Part
- Importance of collaboration across RWHAP Parts

Understanding Part A

- Funding for Eligible Metropolitan Areas (EMAs) and Transitional Grant Areas (TGAs)
- Similarities between RWHAP Part A and Part B
- How RWHAP Part A works
- Types of Fundable Services
- How the Recipient and PC/B collaborate
- Flow of decision making and funds

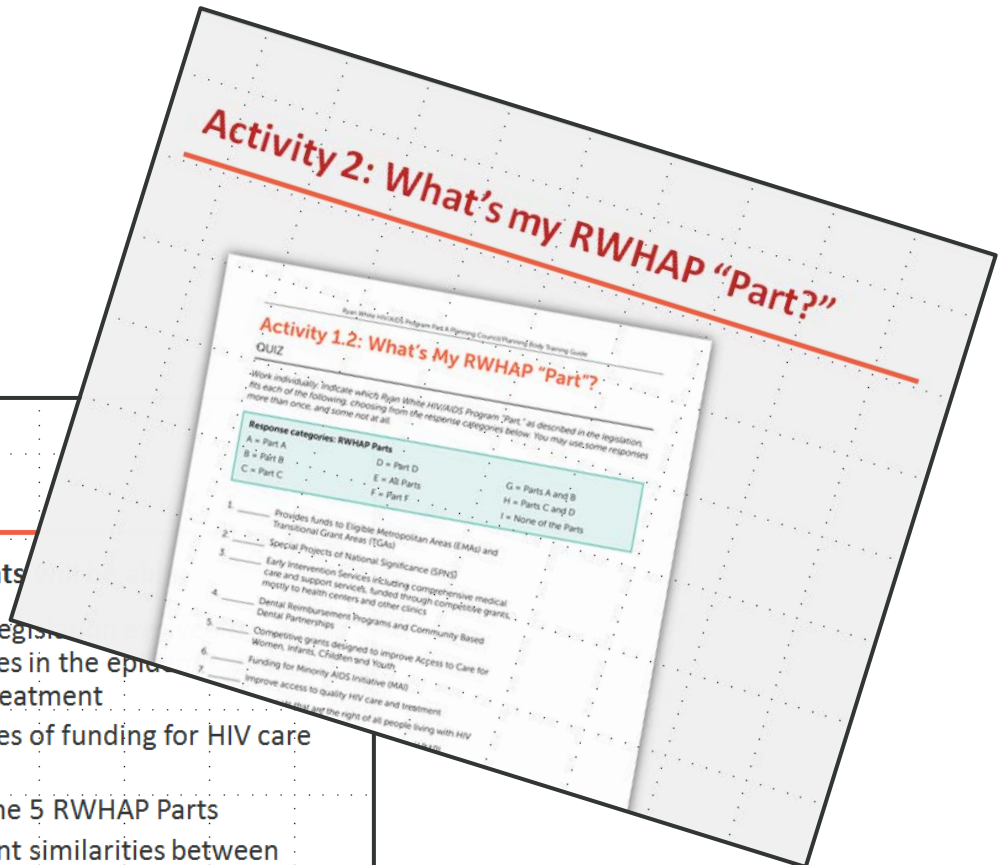
Module Component: Customizable PowerPoint Presentation



Training Objectives

Following the training, participants

1. To describe how the RWHAP legislation has evolved from 1990 to 2009 to reflect changes in the epidemic and advances in prevention and treatment
2. To identify the 3 largest sources of funding for HIV care and treatment in the U.S.
3. To identify and differentiate the 5 RWHAP Parts
4. To describe at least 3 important similarities between RWHAP Part A and Part B
5. To describe at least 4 key characteristics of RWHAP Part A



Module Component: Experiential Activity

Ryan White HIV/AIDS Program Part A Planning Council/Planning Body Training Guide

Activity 1.1: Evolution of the Ryan White HIV/AIDS Program (RWHAP)

FOCUSED SMALL GROUP AND FULL GROUP DISCUSSION



Suggested Use

Use these questions for discussion during the training, after you have finished the part of your presentation that addresses the history and evolution of RWHAP Legislation (slides 1-20 in the sample Module 1 PPT).



Time

Total of about 45 minutes:

- 15-20 minutes for small group discussion
- 25-30 minutes for sharing and discussion in the full group



Materials

- Activity 1.1 Discussion Questions
- Quick Reference Handout 1.1: Ryan White HIV/AIDS Program Timeline
- Copies of PowerPoint slides (optional)



Learning Objectives

1. To identify ways in which the RWHAP legislation has evolved to reflect changes in the epidemic and in HIV prevention and treatment
2. To describe how the RWHAP and their local programs are constantly changing to better serve people living with HIV, based on monitoring and understanding changes in needs and available service models



Knowledge or Skill Development

Awareness and understanding that community needs and HIV prevention and care methods are continually changing, and that RWHAP recipients and planning councils/planning bodies (PC/PBs) have a responsibility to help ensure that service systems address and adapt to these changes.

Types of Activities

- ▶ Pre- and post-tests to self-assess knowledge gained
- ▶ Multiple-choice quizzes
- ▶ Brainstorming
- ▶ Quick review scenarios and discussion questions embedded within presentations
- ▶ In-depth case studies
- ▶ Work sheets – for problem solving or planning
- ▶ Role plays
- ▶ Mock assignments – e.g., establishing service priorities based on a set of data

Module Component: Reference Handout

Ryan White HIV/AIDS Program Part A Planning Council/Planning Body Training Guide

Handout 1.1: Ryan White HIV/AIDS Program Timeline

YEAR	EVENT OR ACTION
1986	▶ Robert Wood Johnson AIDS Health Services Program begins 5-year funding in 11 communities
	▶ HRSA starts its first HIV/AIDS Program, AIDS Service Demonstration Grants to replicate the San Francisco Model, beginning with 4 and later expanding to 24 grantees
1987	▶ AZT becomes the first drug for HIV/AIDS treatment approved by the Food and Drug Administration (FDA)
	▶ Federal AZT Reimbursement Program begins
1988	▶ First Pediatric AIDS Service Demonstration Grants support programs targeting children and their families, becoming the framework for what became the RWHAP Title IV/Part D program for women, children, infants, and youth
1989	▶ HRSA makes its first Low-Prevalence Planning Grants to begin building a continuum of care outside major urban centers
1990	▶ Ryan White Comprehensive AIDS Resources Emergency (CARE) Act is signed into law on August 16 by President George H.W. Bush
1991	▶ First grants under Title I (Part A) of the CARE Act go to 16 Eligible Metropolitan Areas (EMAs) hardest hit by the epidemic
1992	▶ CARE Act grants are made to 18 EMAs
1993	▶ CARE Act grants are made to 25 EMAs
1994	▶ Clinical trials demonstrate that AZT can substantially reduce perinatal HIV transmission
1995	▶ The FDA approves the first protease inhibitors/combination therapy, also known as HAART (highly active antiretroviral therapy)
	▶ HRSA issues and widely disseminates a major program advisory on use of AZT during pregnancy and delivery
1996	▶ HAART becomes widely available and the death rate from HIV/AIDS declines rapidly
	▶ CARE Act is reauthorized, with separate funding for the AIDS Drug Assistance Program (ADAP) to ensure broad access to HAART, and new programs including the AIDS Dental Reimbursement Program to support oral health services, Special Projects of National Significance (SPNS) to fund innovative models of care, and the AIDS Education and Training Centers (AETC) Program to provide multidisciplinary education and training for clinical providers

Trainer Resources Included in All Modules

- ▶ Trainer Notes provide:
 - Module purpose and learning objectives
 - Suggestions for how to use module components
 - Suggestions for localizing content
 - Background information: key concepts, terms, and references
- ▶ Activities include:
 - Trainer and participant instructions
 - All needed handouts and materials

Training Guide Activity:

Try out an activity from the Training Guide.



Compendium of Materials for Planning Council Support Staff

www.TargetHIV.org/planning-chatt/pcs-compendium

- Designed to help Planning Council Support (PCS) staff carry out their duties supporting the work of RWHAP Part A PC/PBs
- Provides tools and templates, model orientation and training materials, and offers tips and sound practices from PC/PBs
- Developed by EGM Consulting with help from PSC managers Sandra Vincent of Atlanta, GA and Marvin Krieger of Hudson County, NJ, and placed online by Planning CHATT

Compendium of Materials for Planning Council Support Staff

- Introduction and Use of the Compendium
- Legislative Requirements
- Planning Council Support: Structure, Staffing, and Responsibilities
- Membership
- Implementing Legislative Requirements
- Relationships: Planning Council/Body, Recipient and Chief Elected Official
- Orientation and Training for Members and Potential Members
- Planning Council/Body Operations
- Resources

Webinars

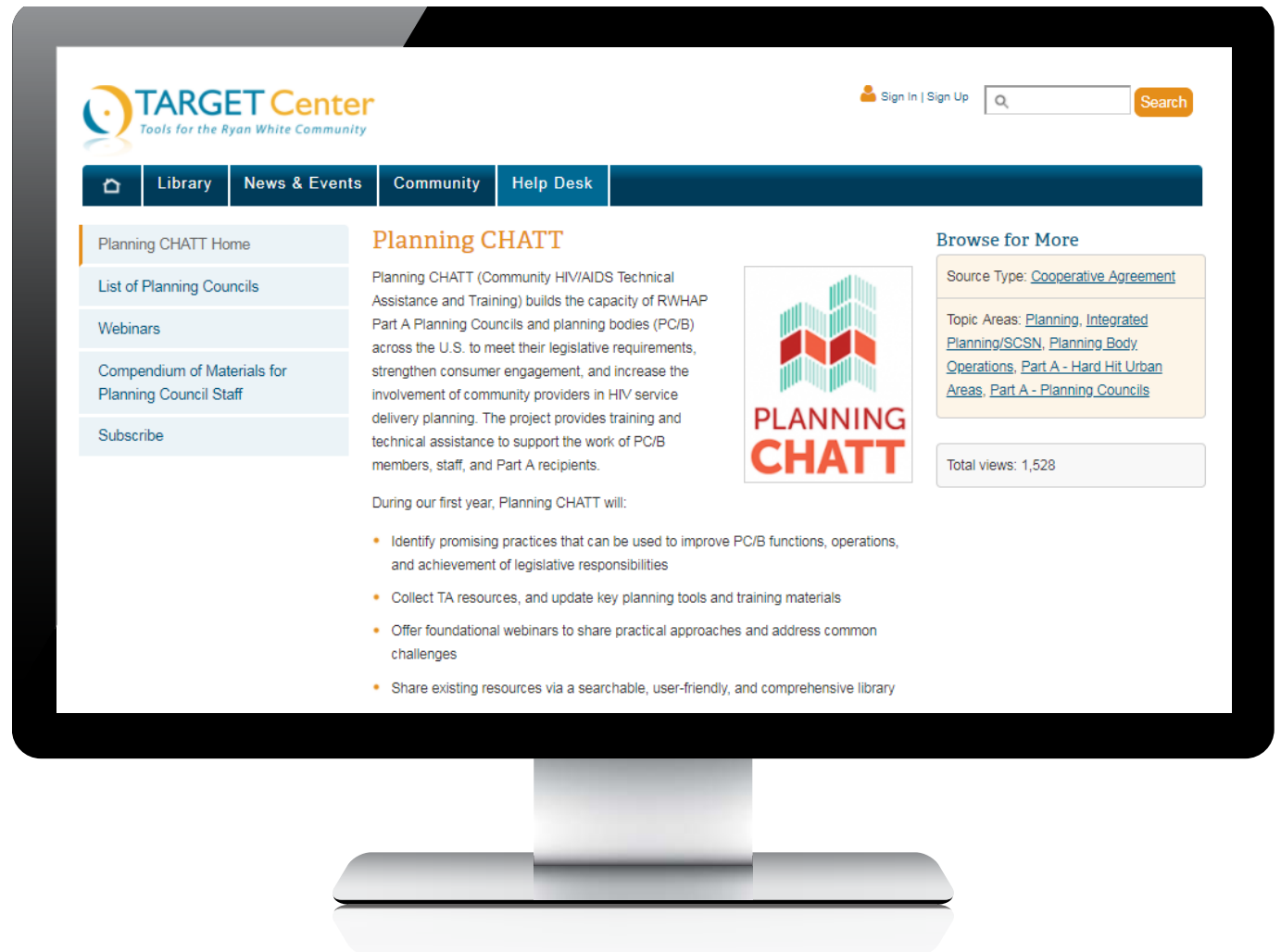


Recent webinars

- ▶ Building Strong Planning Councils/Planning Bodies
 - Part I: Roles and Responsibilities
 - Part II: Tools and Strategies for Building and Maintaining Strong Relationships
- ▶ Needs Assessment
- ▶ Priority Setting and Resource Allocation

Find webinar videos at: targethiv.org/planning-chatt/webinars

targethiv.org/
planning-CHATT



Targeted TA and Training (T/TA)



Targeted T/TA

- ▶ Targeted T/TA builds capacity in a select number of jurisdictions where needs align with project objectives
- ▶ TA is delivered both remotely and in-person
- ▶ Lessons learned from these engagements will inform development of nationally-focused resources
- ▶ TA requests are initiated by Project Officers, who submit requests for TA to CHATT Project Officer
 - Contact your Project Officer with any questions

What's Next?



Webinars



Upcoming Webinars

▶ Winter 2019

- Strategies and Promising Practices to Recruit and Retain Members
- Setting the Foundation for a Good Relationship between PC/PB and Recipient

▶ Spring 2019

- Using Data for Decision-Making (series of 2 webinars)
- Making PC/PBs youth and young-adult friendly (series of 2 webinars)

Peer-to-Peer Discussion

**PC/PB Membership: Challenges and
Strategies**



Join a Small Group Discussion

1. Recruiting and retaining youth/young adults to be PC/PB members
2. Recruiting and retaining other underrepresented groups to be PC/PB members (to be reflective of local HIV epidemic)
3. Recruiting and retaining provider representatives and other non-consumer stakeholders (e.g. state agency representatives)
4. Orientation and training of new PC/PB members

Small Group Discussion Questions

1. What are your PC/PB's greatest challenges in this area?
2. What are some strategies your PC/PB has tried to address these challenges? Were they successful?
3. What additional resources and support might be helpful in addressing these challenges?

Questions and Discussion



To Find Out More:

- ▶ Visit Our Booth
- ▶ Attend our other upcoming sessions
 - Engaging a New Generation of Consumers in RWHAP Planning: Innovations that Work - Wednesday, December 12, 2018 at 4:00 p.m.
 - Subpopulation-based Needs Assessment: A Hands-on Design Session for Non-Experts - Friday, December 14, 2018 at 10:15am
- ▶ Attend the Planning CHATT PCS staff Information Sharing Session - Thursday, December 13, 2018 at 5:00 p.m.

Thank You and Contact Information

targethiv.org/planning-CHATT

Sign up for the mailing list, download tools and resources, view archived webinars and more...

Contact the project: planningCHATT@jsi.com



PLANNING CHATT

Community HIV/AIDS
Technical Assistance & Training