

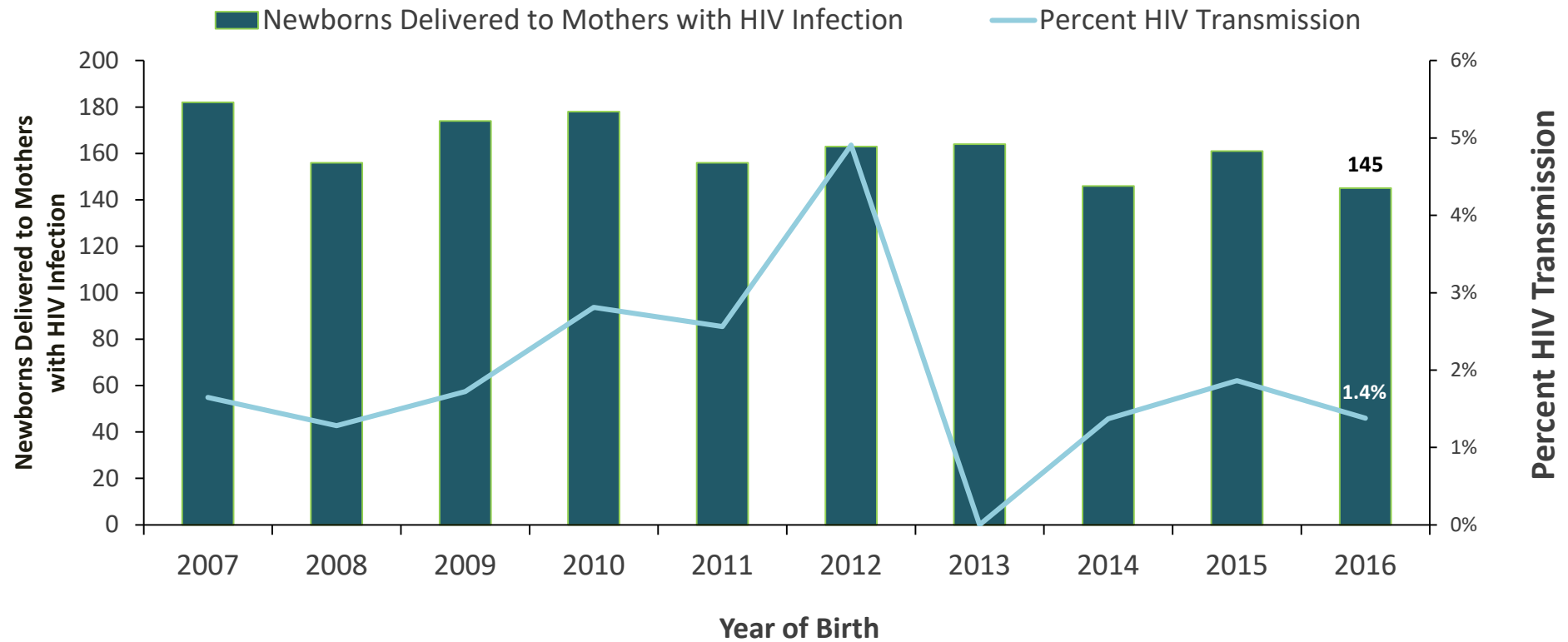
Perinatal HIV Prevention Cascade

Jessica Fridge, MSPH

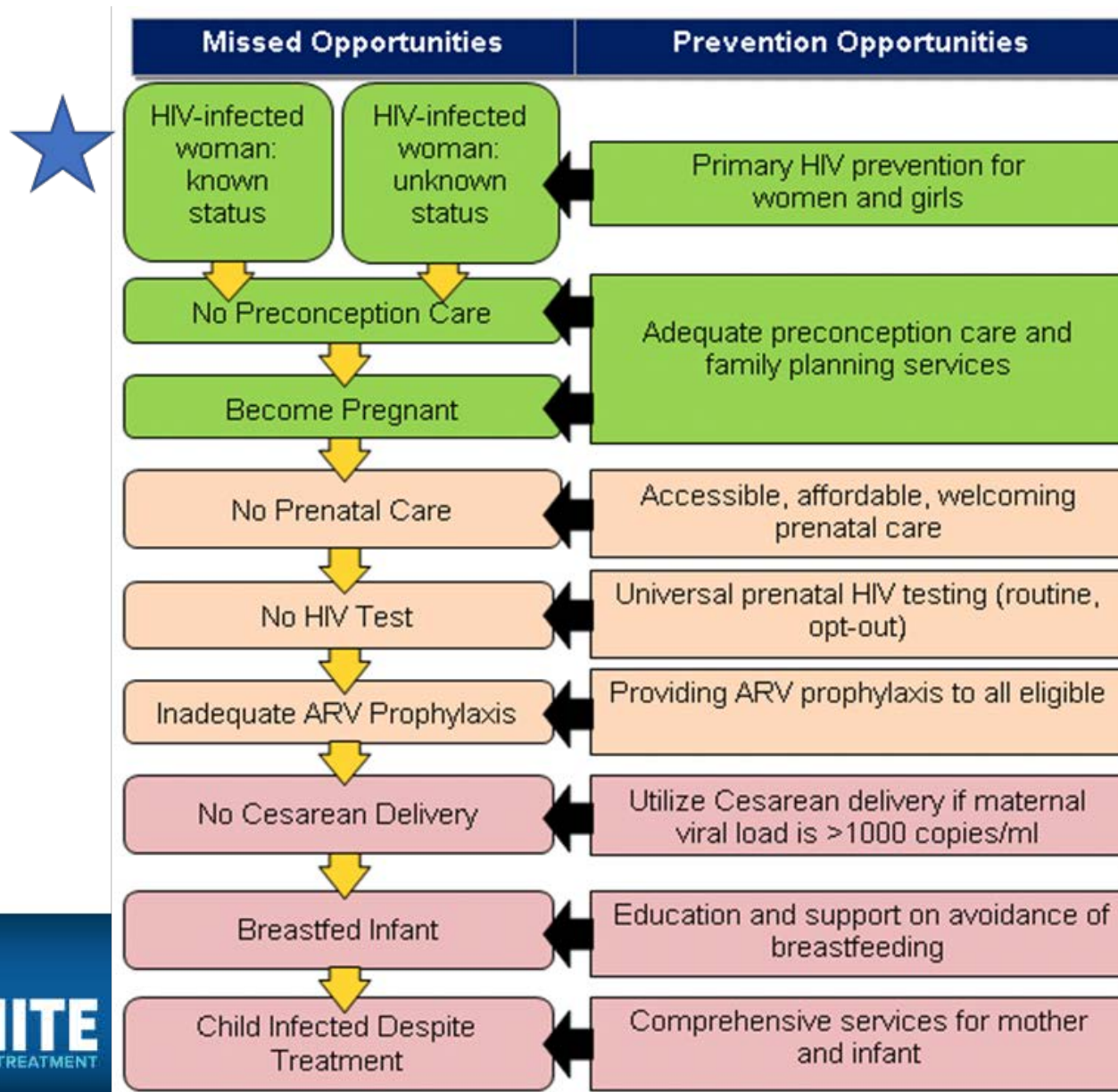
Surveillance Manager, Louisiana Department of Health, STD/HIV/Viral Hepatitis Program

Perinatal HIV Exposure in Louisiana

Perinatal HIV Exposure and Transmission
Louisiana, 2007-2016



Perinatal HIV Prevention Cascade

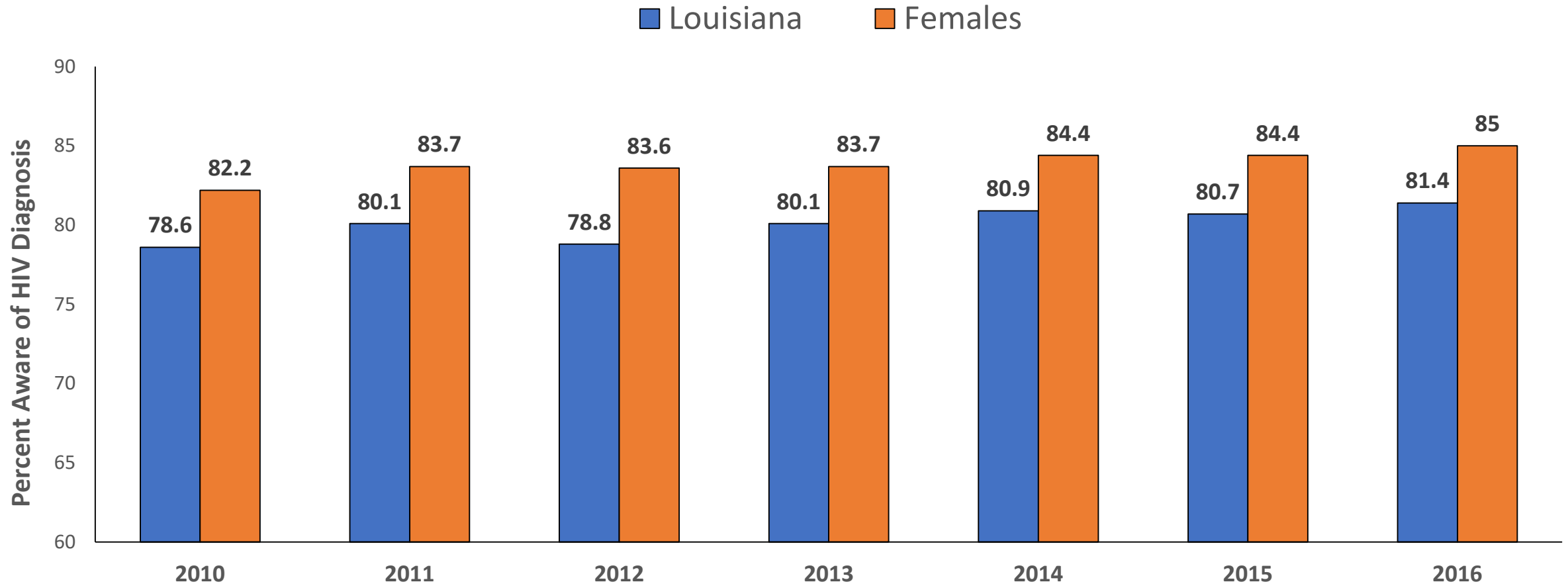


Fetal Infant Mortality Review/HIV (FIMR/HIV)

- The FIMR/HIV Prevention Methodology is an action-oriented community process that continually assesses, monitors, and works to improve service systems and community resources for women, infants, and families.
- The goal of the FIMR/HIV Prevention Methodology is to improve perinatal HIV prevention systems by using the FIMR case review and community action process.
- In 2009, the Louisiana STD/HIV Program and the Louisiana Bureau of Family Health partnered to carry out FIMR/HIV methodology in the New Orleans region.
- The FIMR/HIV Methodology follows a five-step process for data collection, review, and community action:

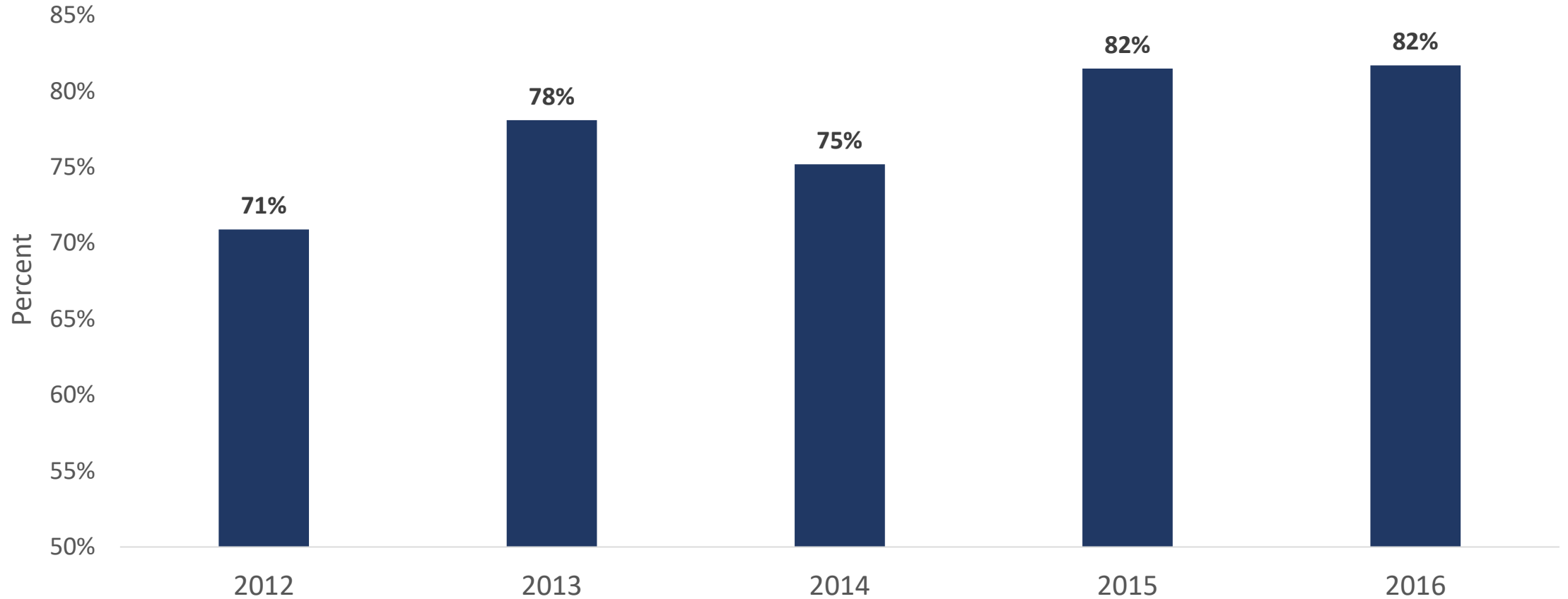


Louisiana – Estimated Percent Aware



Women Living with HIV Diagnosis Prior to Pregnancy

Women Diagnosed with HIV Prior to Delivery By Birth Year, Louisiana 2012-2016



CDC Recommendations and Louisiana Legislation

- Since 2006, the CDC has recommended repeat HIV testing during the third trimester for pregnant women in areas with high HIV incidence; Louisiana has high HIV incidence.
- In 2007, the Louisiana Legislature passed RS 40:1091, a law that required offering both HIV and syphilis testing to all pregnant women at the first prenatal care visit.
- Since the passage of this law, at least 40 women have been diagnosed annually with HIV during pregnancy and approximately 2,000 pregnant women have been diagnosed with syphilis.
- HIV and syphilis are also reportable conditions during pregnancy per the Louisiana Sanitary Code.

Passage of Third-Trimester Testing Law

2011

- 1st Attempt: Proposed legislative bill to DHH
- CDC conducted state-wide Epi-Aid and Rapid Ethnographic Assessment in Shreveport Region due to high rates of congenital syphilis and syphilis among women

2012

- Expanded role of Perinatal Coordinator to include congenital syphilis
- 2nd Attempt: Proposed legislative bill to DHH

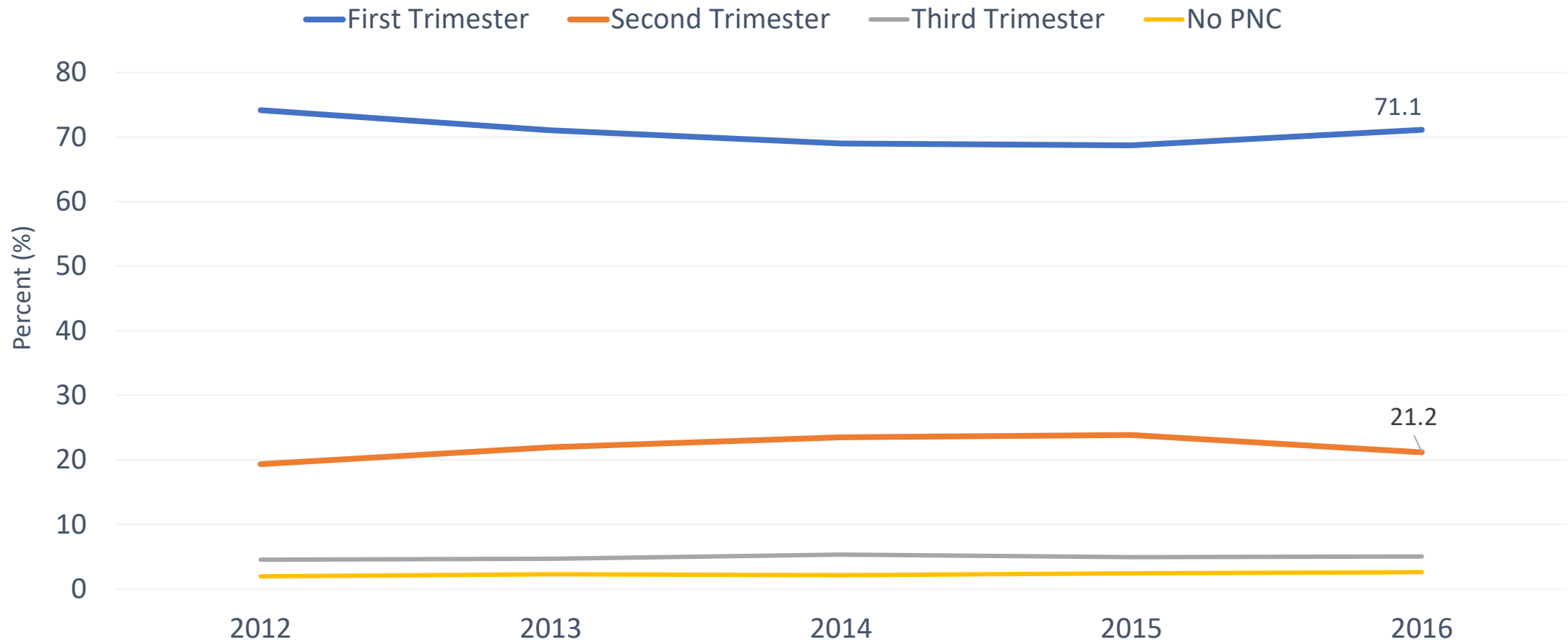
2013

- FIMR/HIV CRT Recommendations for routine late pregnancy/3rd trimester testing
- 3rd Attempt: Proposed legislative bill to DHH (Success!)

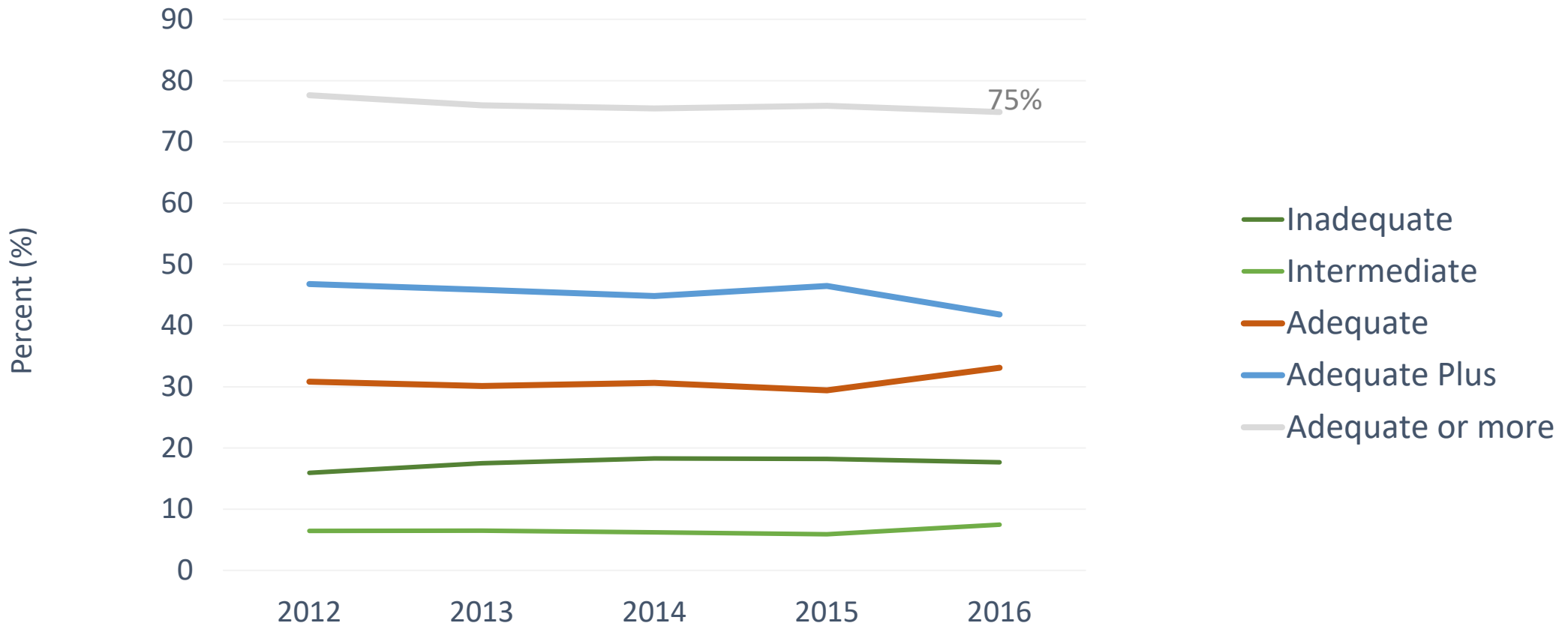
2014

- Act 459 became effective on June 4, 2014. Requires physicians to offer opt-out HIV and syphilis screening in the third trimester.

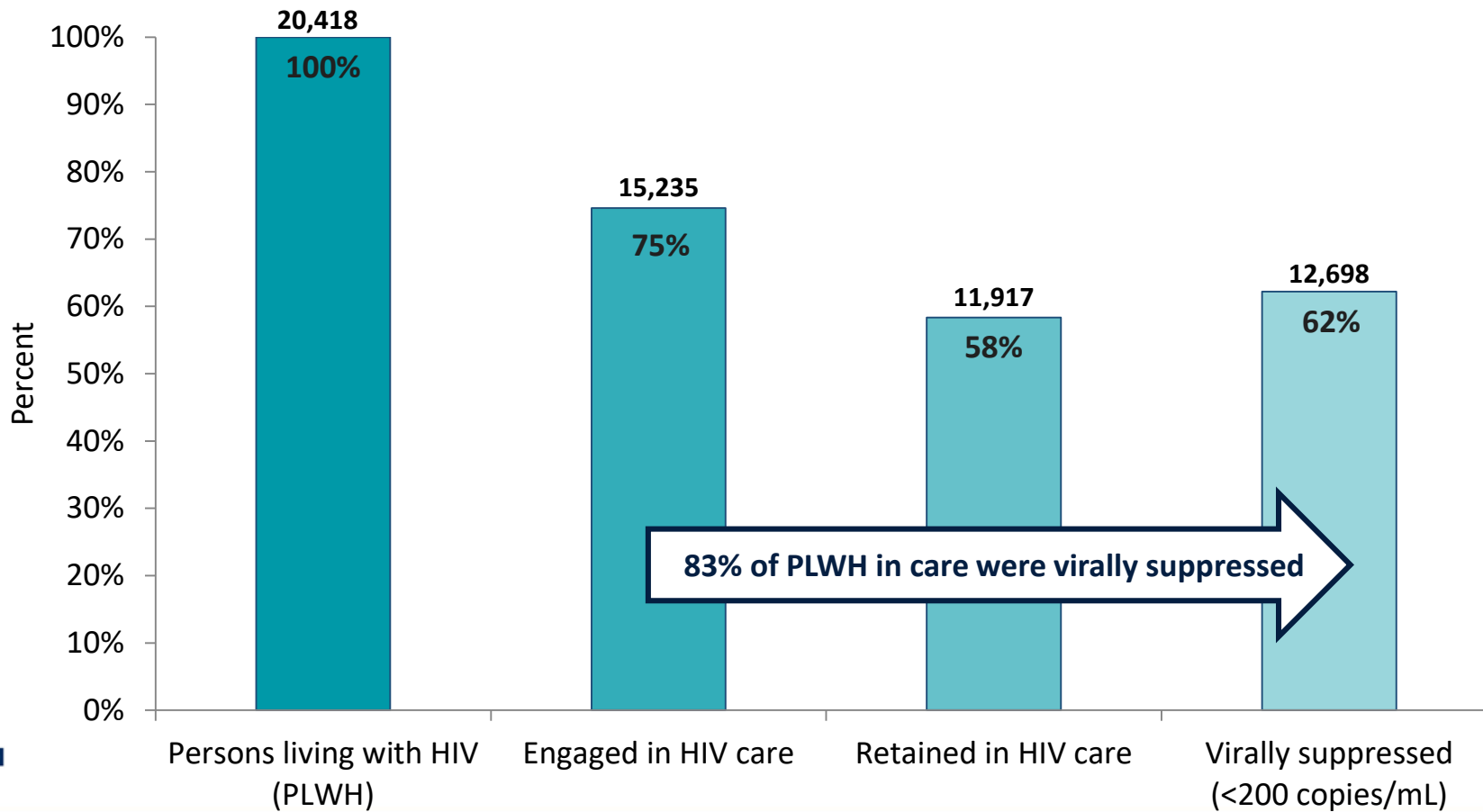
Prenatal Care Entry, Louisiana



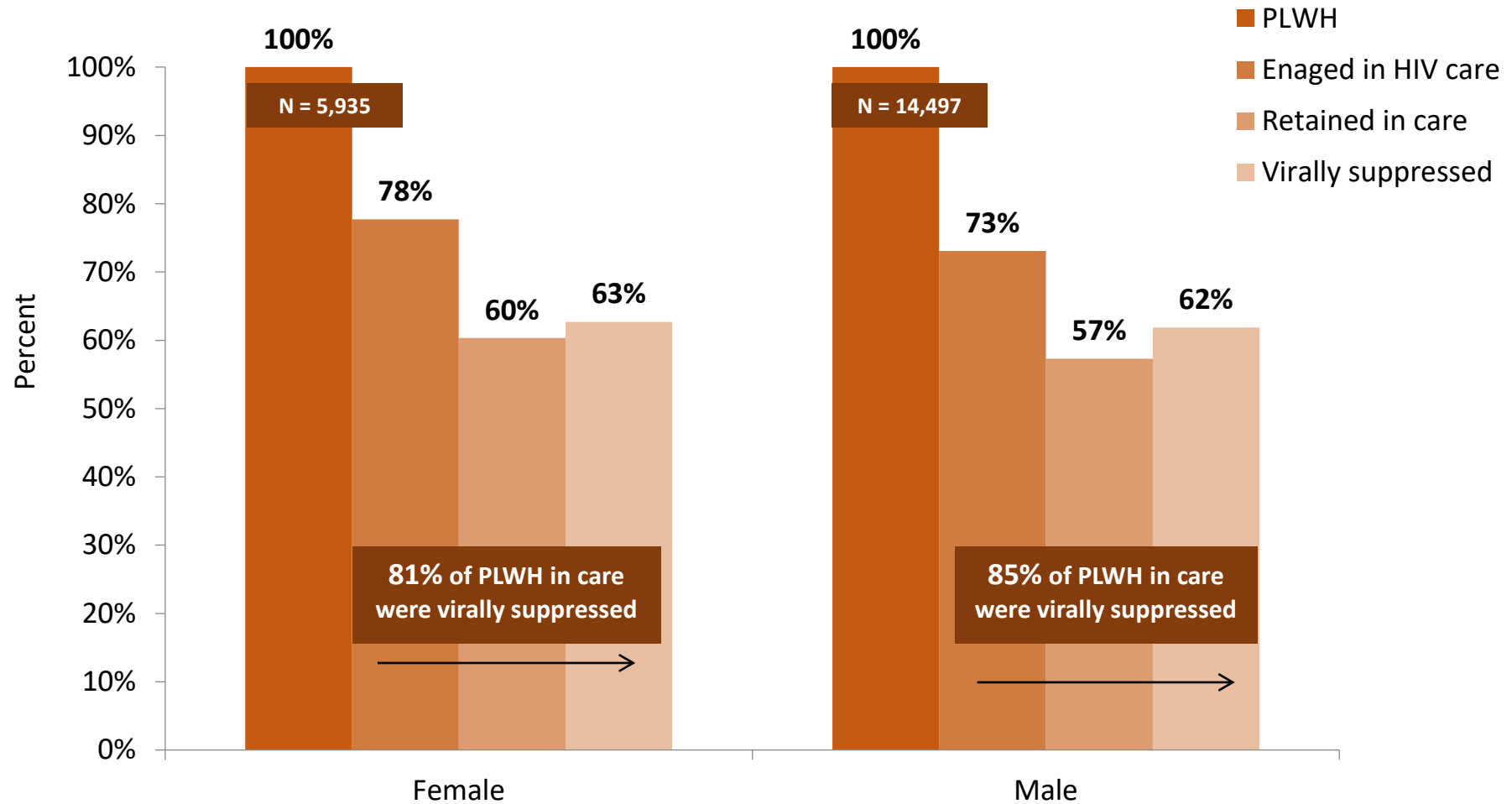
Prenatal Care Adequacy



HIV Continuum of Care Louisiana, 2017



HIV Care Continuum by Sex at Birth Louisiana, 2017



Louisiana Links (LA Links)

- Data-to-care strategy implemented across Louisiana since Oct 2013
- Utilizes HIV surveillance data to identify people living with HIV (PLWH) who are:
 - Newly diagnosed and not linked to care
 - Previously diagnosed who need reengagement
 - In care, but experiencing high viral loads
- Persons added to line lists based on time since last lab and/or viral suppression history
- Linkage to care coordinators (LCCs) provide extensive services to address social barriers to care engagement and viral suppression maintenance
- Pregnant women or new mothers, can be fast tracked into the LA Links database.

Lessons Learned – Barriers to Care

- Need to make use of data collected on barriers to care
 - Clients still interacting with systems that may have previously failed them
- Work with and help to change systems with policies rooted in:
 - Racism, Homophobia, Transphobia
- How do social determinants affect linkage and maintenance in care and what can we do as Linkage to Care Coordinators and as an agency to address these issues?
 - Poverty
 - Stigma
 - Mental health issues
 - Substance abuse
 - Homelessness
 - Healthcare system policies
 - Insurance status – Medicaid expansion
 - Domestic abuse
 - Language access
 - Immigration status
 - Community violence

Questions?

Jessica Fridge, MSPH

STD/HIV/ Viral Hepatitis Surveillance Manager

Jessica.Fridge@la.gov