

Success and Barriers to Collaboration



OBJECTIVES

At the end of this unit, participants will be able to:

- Use specific strategies to build partnerships with agencies and groups



INSTRUCTIONS

1. Prior to the session, prepare flip chart sheets with the headings: Challenges to Collaboration, Trust Building, and Reflection on Strategies.
2. Explain that now we will spend time discussing some of our own successes in collaborating with other agencies and some of the barriers to collaboration.
3. Hand out yellow and green sticky notes and a marker to each participant. Ask participants to write one thing that has helped them build trust and collaborate with community partners on the yellow note. On the green note, ask them to write one challenge they have experienced when collaborating with community partners. Ask participants to keep the agencies anonymous.
4. Ask each individual to read their notes aloud and place them on the corresponding flip chart sheets (Challenges to Collaboration, Trust Building).
5. Ask, "What are some strategies you have used to build and maintain relationships with other agencies? How have you navigated challenges to collaborating with other agencies?" Write answers on the Reflection on Strategies flip chart sheet.
6. Review tips for building relationships with agencies if they were not stated by the participants (slide 3).
7. Wrap Up. Thank everyone for sharing and explain that even though there are challenges and barriers to collaboration, one of the roles of a CHW is to collaborate across agencies to promote the well-being of the people they work with by ensuring that they are provided with culturally appropriate and accessible care.



Related C3 Roles

Care coordination, case management, and system navigation; cultural mediation among individuals, communities, and health and social service systems; advocating for individuals and communities; conducting outreach

Related C3 Skills

Service coordination and navigation skills, advocacy skills, outreach skills, professional skills and conduct



Method(s) of Instruction

Individual work, group discussion, brainstorm



Estimated time

30 minutes



Key Concepts

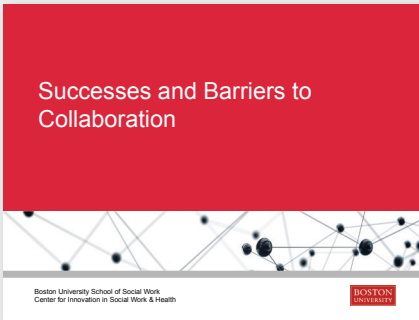
Collaboration, barriers, relationship building



Materials

- Computer with internet access and projector
- PowerPoint slides
- Sticky notes in different colors (e.g. green and yellow)
- Flip chart
- Markers

Success and Barriers to Collaboration

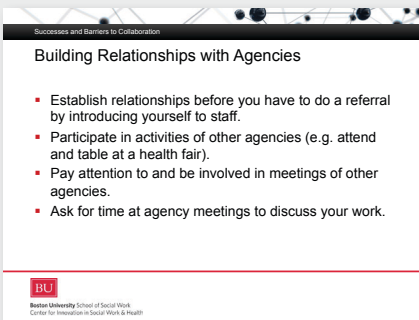


SLIDE 1



SLIDE 2

Review the objectives.



SLIDE 3

Mention the following points about how to build relationships with agencies if they were not stated by the participants.

Acknowledgements

This curricula draws from and is adapted from other training curricula for peer educators and community health workers, such as the Building Blocks to Peer Success (<https://ciswh.org/resources/HIV-peer-training-toolkit>) and the Community Capacitation Center, Multnomah County Health Department (<https://multco.us/health/community-health/community-capacitation-center>)

Team

Serena Rajabiun

Simone Phillips

Alicia Downes

Maurice Evans

LaTrischa Miles

Jodi Davich

Beth Poteet

Rosalia Guerrero

Precious Jackson

Maria Campos Rojo

This project is/was supported by the Health Resources and Services Administration (HRSA) of the U.S. Department of Health and Human Services (HHS) under grant number U69HA30462 "Improving Access to Care: Using Community Health Workers to Improve Linkage and Retention in HIV Care" (\$2,000,000 for federal funding). This information or content and conclusions are those of the author and should not be construed as the official position or policy of, nor should any endorsements be inferred by HRSA, HHS or the U.S. Government.

Suggested Citation:

Boston University Center for Innovation in Social Work & Health. (2019). A Training Curriculum for Using Community Health Workers to Improve Linkage and Retention in HIV Care. Retrieved from: <http://ciswh.org/chw-curriculum>



Boston University School of Social Work
Center for Innovation in Social Work & Health